

# Industrial/Commercial Masonry Construction with Exterior Insulation up to 4 Stories

## Intended Use of this Document

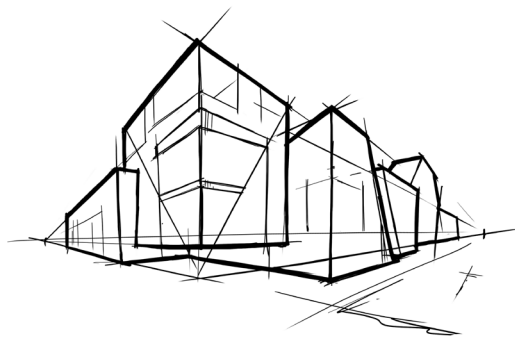
This document provides example key assembly interface details showing the use of ROCKWOOL® products within an exterior insulated wall assembly for low-rise commercial and industrial masonry buildings up to 4 stories.

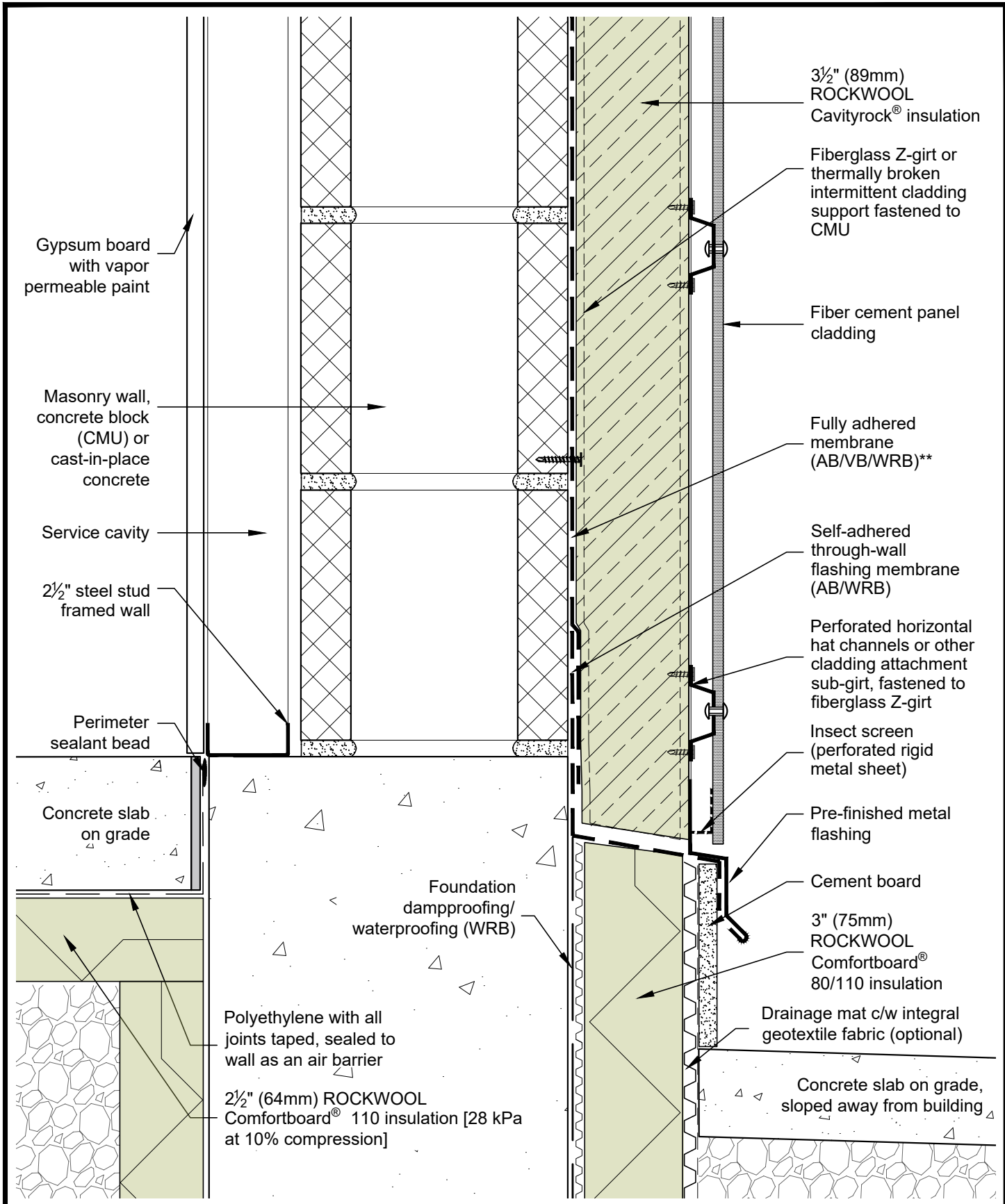
The example details could be modified for other building types or applications. The intended use has been limited to 4 stories for the sole purpose of creating boundaries around the detail development. The details are also assumed to be applicable in non-coastal wind zones. For considerations in coastal wind zones, contact ROCKWOOL® Building Science Support. The example details are designed to be generally applicable across North America; however, specific end use applications vary widely as to design, materials, and environments. Therefore, what is appropriate in any specific end use application is a determination that must be made independently by the experienced Project Architect and/or Engineer in their own professional judgment. ROCKWOOL® fully disclaims any liability for any of the content contained herein whether such liability be premised on a theory of contract, tort, or otherwise.

These example details are intended to provide architects, builders, and contractors with general guidance on the best practice approach to maintain:

- Air barrier continuity,
- Water resistant barrier (moisture barrier) continuity,
- Thermal continuity and minimizing thermal bridges,
- Cladding attachment and detailing, and
- Adequate drainage and ventilation of the wall cavity.

It is important to note these details show one method of constructing an exterior insulated, exterior air barrier wall assembly; however, subtle changes at interface locations could be made to achieve the same intent. Review the building code requirements for your jurisdiction to ensure that all wall assembly detailing is in general conformance, or contact ROCKWOOL® Building Science Support for support on your project.





**INDUSTRIAL/COMMERCIAL MASONRY WITH EXTERIOR INSULATION UP TO 4 STORIES - MEDIUM TO HEAVY CLADDING**



DRAWING TITLE:

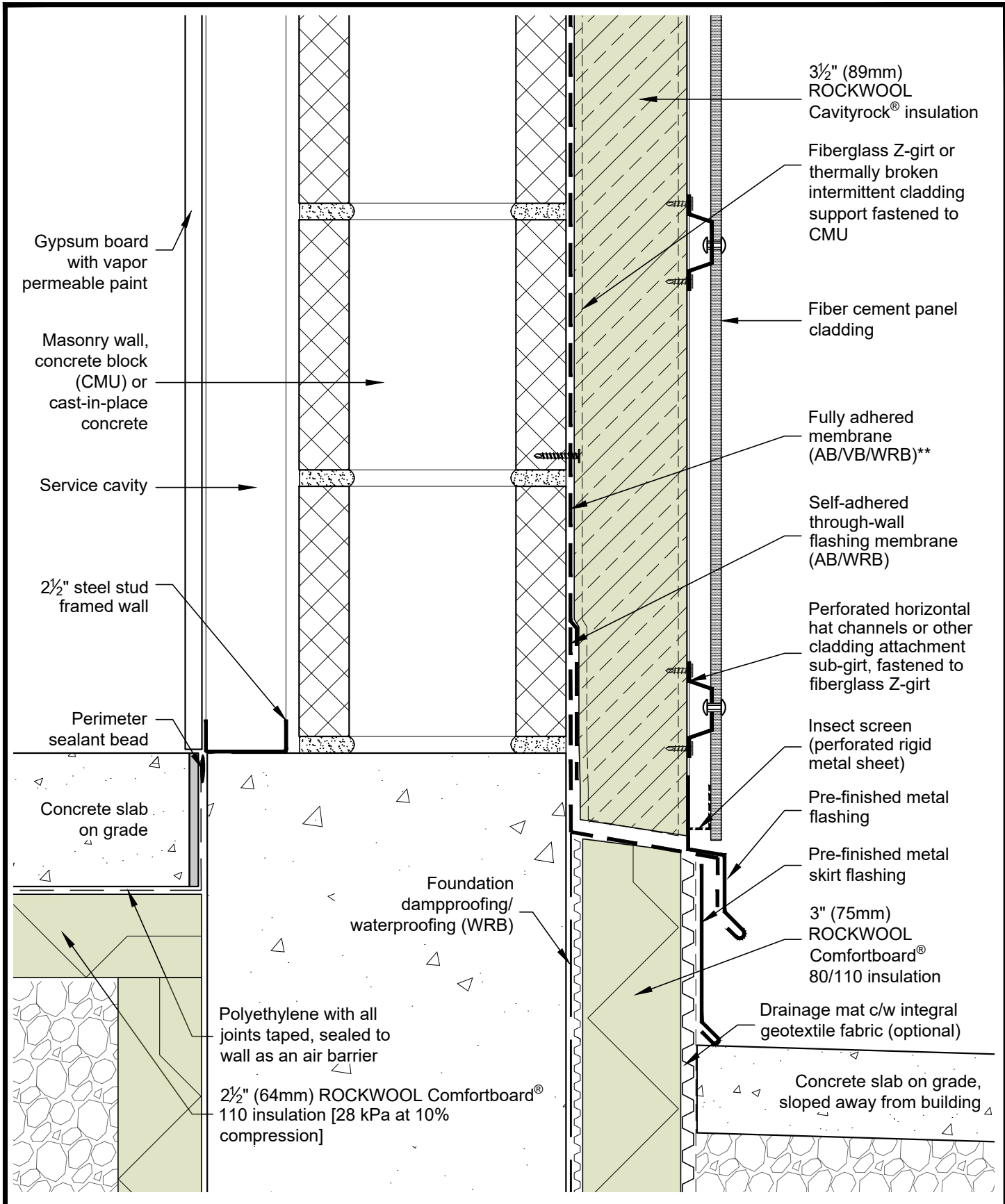
TYPICAL BASE OF WALL AT SLAB-ON-GRADE

DRAWING NO.:  
Detail 01

SCALE: 3" = 1'-0"  
DATE: NOVEMBER 2022

November 02 2022 10:33 PM

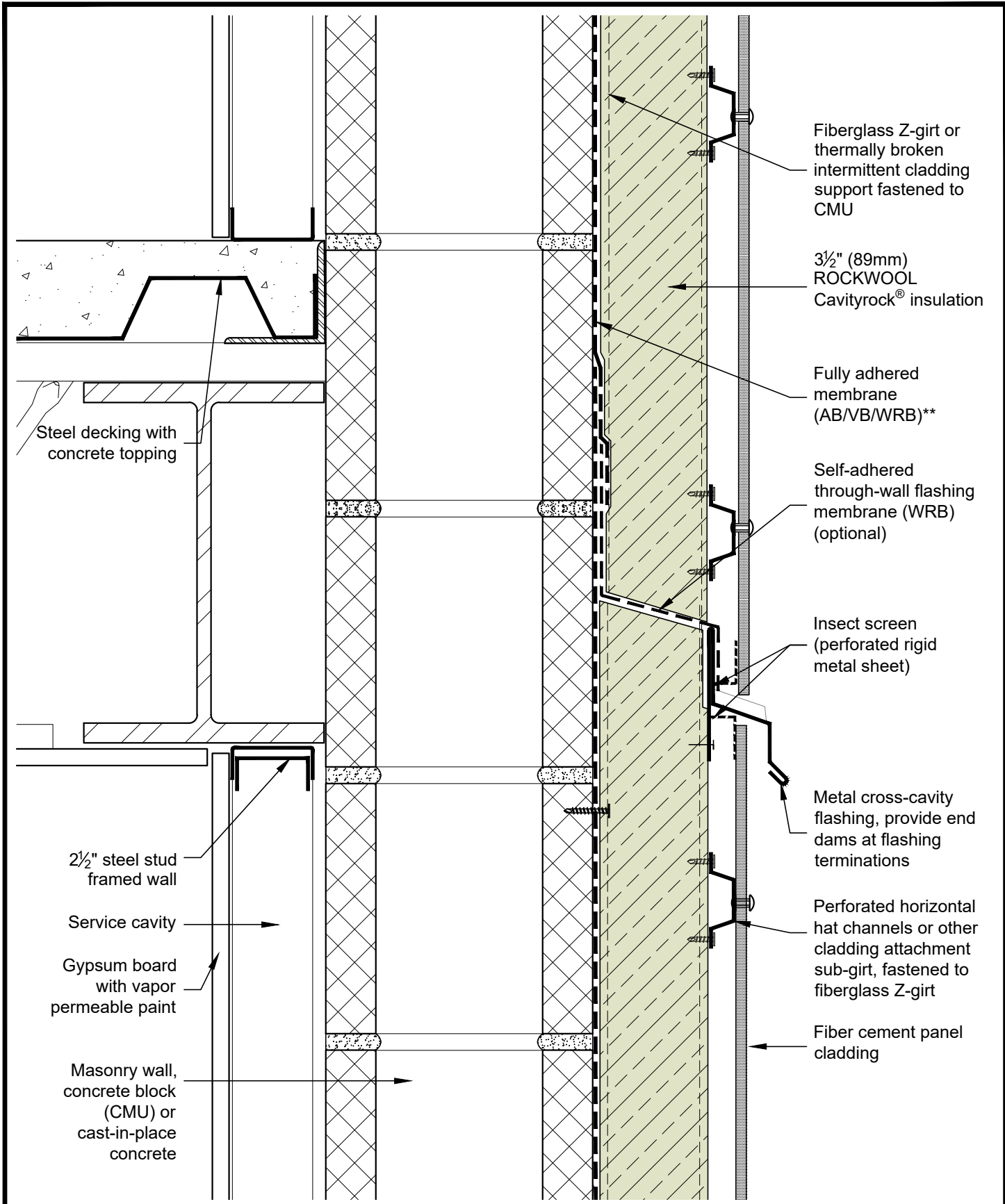
\* For thermal performance of ROCKWOOL® products, please refer to ROCKWOOL® technical data sheets  
 \*\* For climate zone specific considerations for thermal, air and vapor control layer properties and requirements, please contact ROCKWOOL® Building Science for support.



<b>INDUSTRIAL/COMMERCIAL MASONRY WITH EXTERIOR INSULATION UP TO 4 STORIES - MEDIUM TO HEAVY CLADDING</b>		
<b>TYPICAL BASE OF WALL AT SLAB-ON-GRADE</b>		
DRAWING TITLE:	Detail 01a	DRAWING NO.: SCALE: 3" = 1'-0" DATE: NOVEMBER 2022

November 02 2022 10:33 PM

\* For thermal performance of ROCKWOOL® products, please refer to ROCKWOOL® technical data sheets  
 \*\* For climate zone specific considerations for thermal, air and vapor control layer properties and requirements, please contact ROCKWOOL® Building Science for support.



**INDUSTRIAL/COMMERCIAL MASONRY WITH EXTERIOR INSULATION UP TO 4 STORIES - MEDIUM TO HEAVY CLADDING**

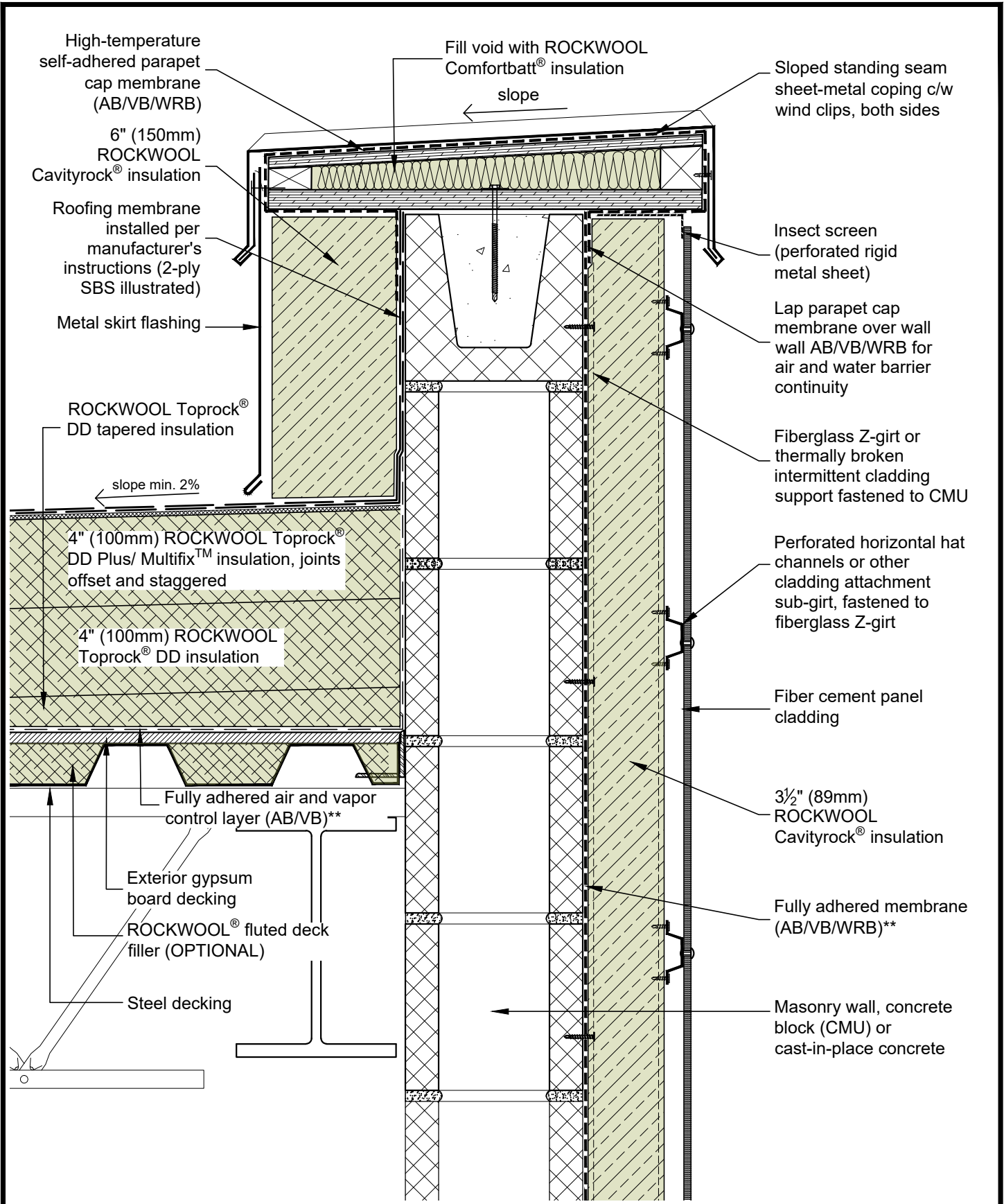


DRAWING TITLE: **TYPICAL WALL AT FLOOR LEVEL**

DRAWING NO.: **Detail 02**  
 SCALE: **3" = 1'-0"**  
 DATE: **NOVEMBER 2022**

November 02 2022 10:33 PM

\* For thermal performance of ROCKWOOL® products, please refer to ROCKWOOL® technical data sheets  
 \*\* For climate zone specific considerations for thermal, air and vapor control layer properties and requirements, please contact ROCKWOOL® Building Science for support.



**INDUSTRIAL/COMMERCIAL MASONRY WITH EXTERIOR INSULATION UP TO 4 STORIES - MEDIUM TO HEAVY CLADDING**

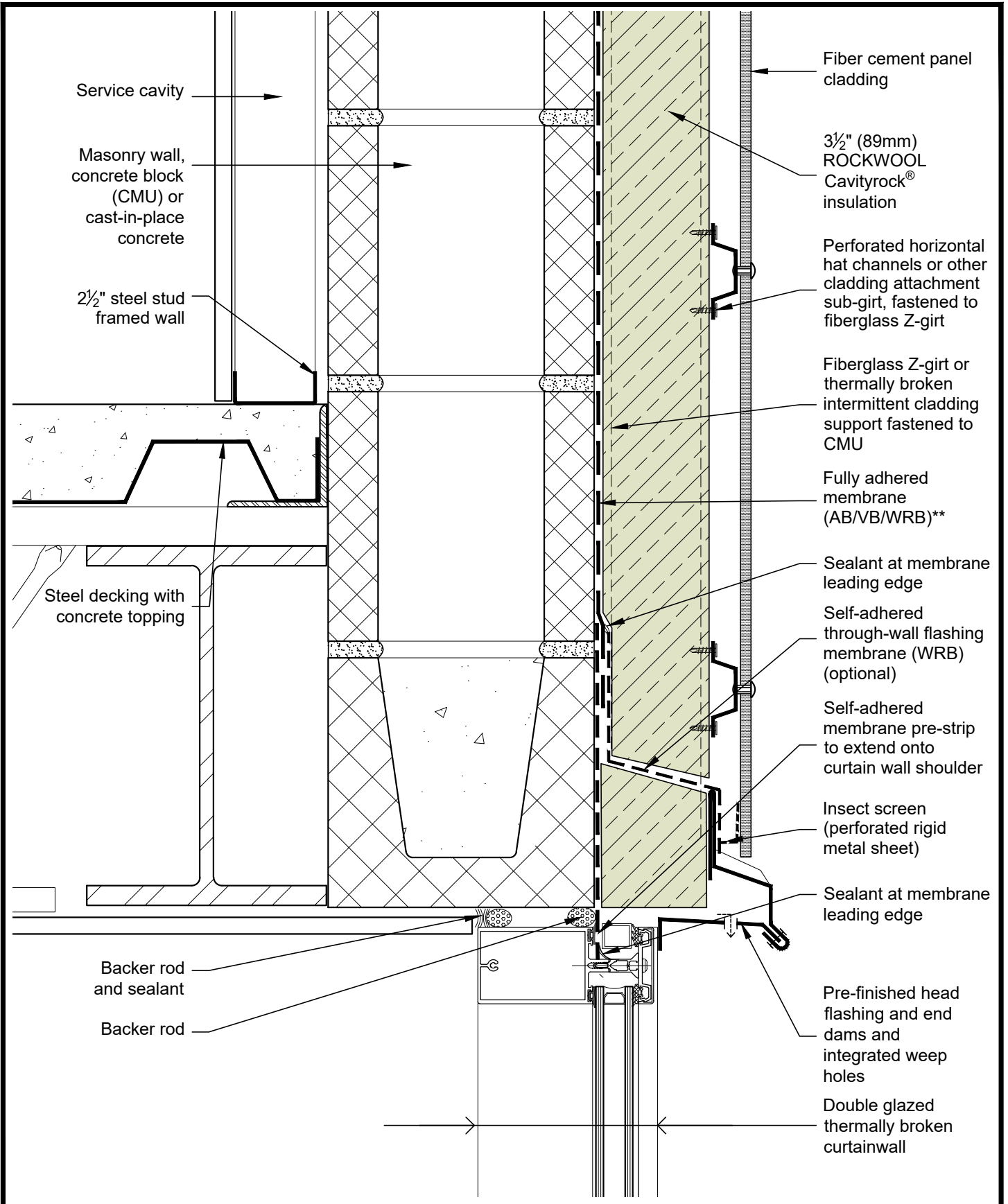


DRAWING TITLE: **TYPICAL LOW SLOPE ROOF PARAPET**

DRAWING NO.: **Detail 03**  
 SCALE: 2" = 1'-0"  
 DATE: NOVEMBER 2022

November 02 2022 10:33 PM

\* For thermal performance of ROCKWOOL® products, please refer to ROCKWOOL® technical data sheets  
 \*\* For climate zone specific considerations for thermal, air and vapor control layer properties and requirements, please contact ROCKWOOL® Building Science for support.



**INDUSTRIAL/COMMERCIAL MASONRY WITH EXTERIOR INSULATION UP TO 4 STORIES - MEDIUM TO HEAVY CLADDING**



DRAWING TITLE:  
**TYPICAL CURTAIN WALL WINDOW HEAD**

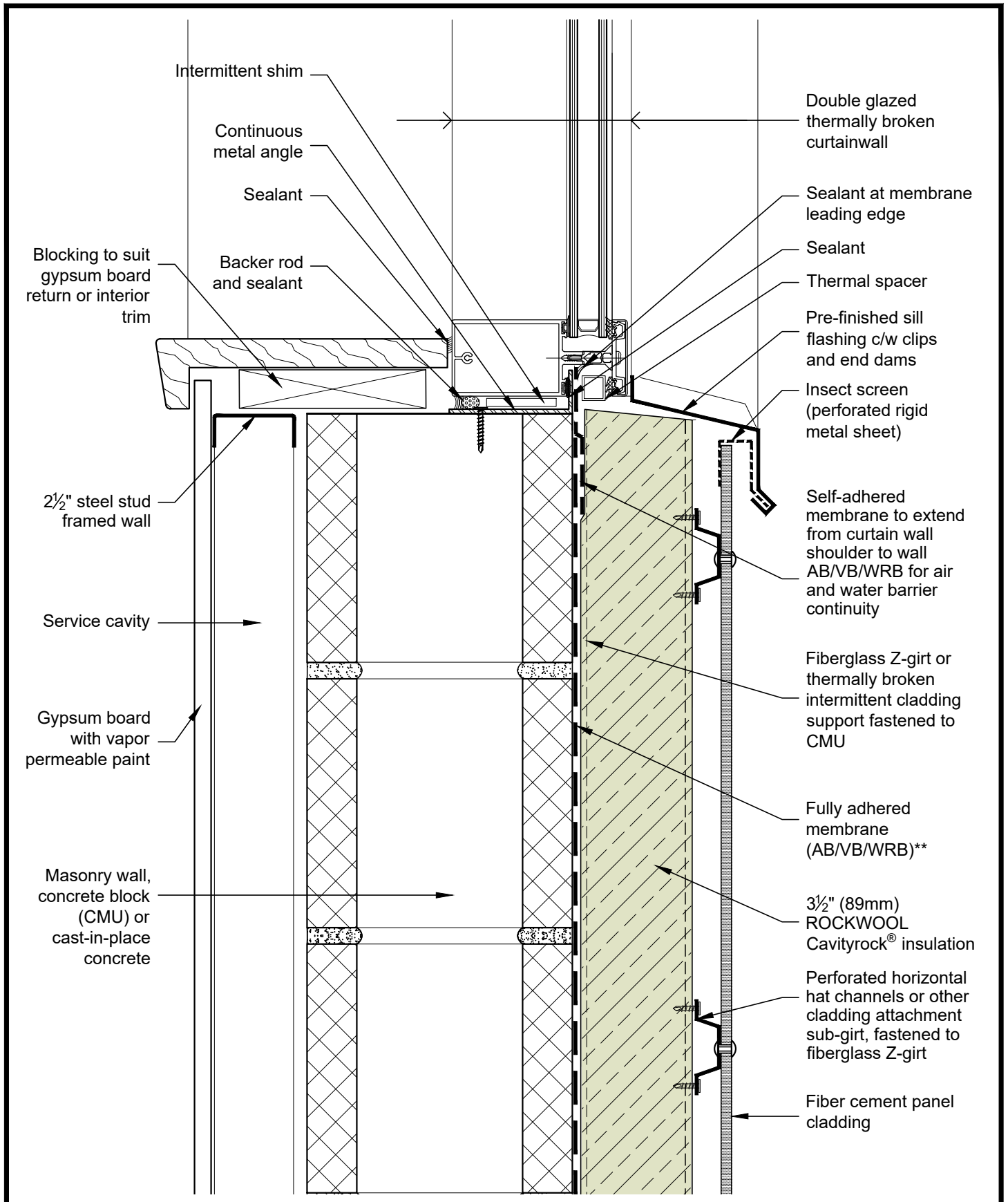
DRAWING NO.:  
**Detail 04**

SCALE: 3" = 1'-0"

DATE: NOVEMBER 2022

November 02 2022 10:33 PM

\* For thermal performance of ROCKWOOL® products, please refer to ROCKWOOL® technical data sheets  
 \*\* For climate zone specific considerations for thermal, air and vapor control layer properties and requirements, please contact ROCKWOOL® Building Science for support.



**INDUSTRIAL/COMMERCIAL MASONRY WITH EXTERIOR INSULATION UP TO 4 STORIES - MEDIUM TO HEAVY CLADDING**



DRAWING TITLE:

TYPICAL CURTAIN WALL WINDOW SILL

DRAWING NO.:

Detail 05

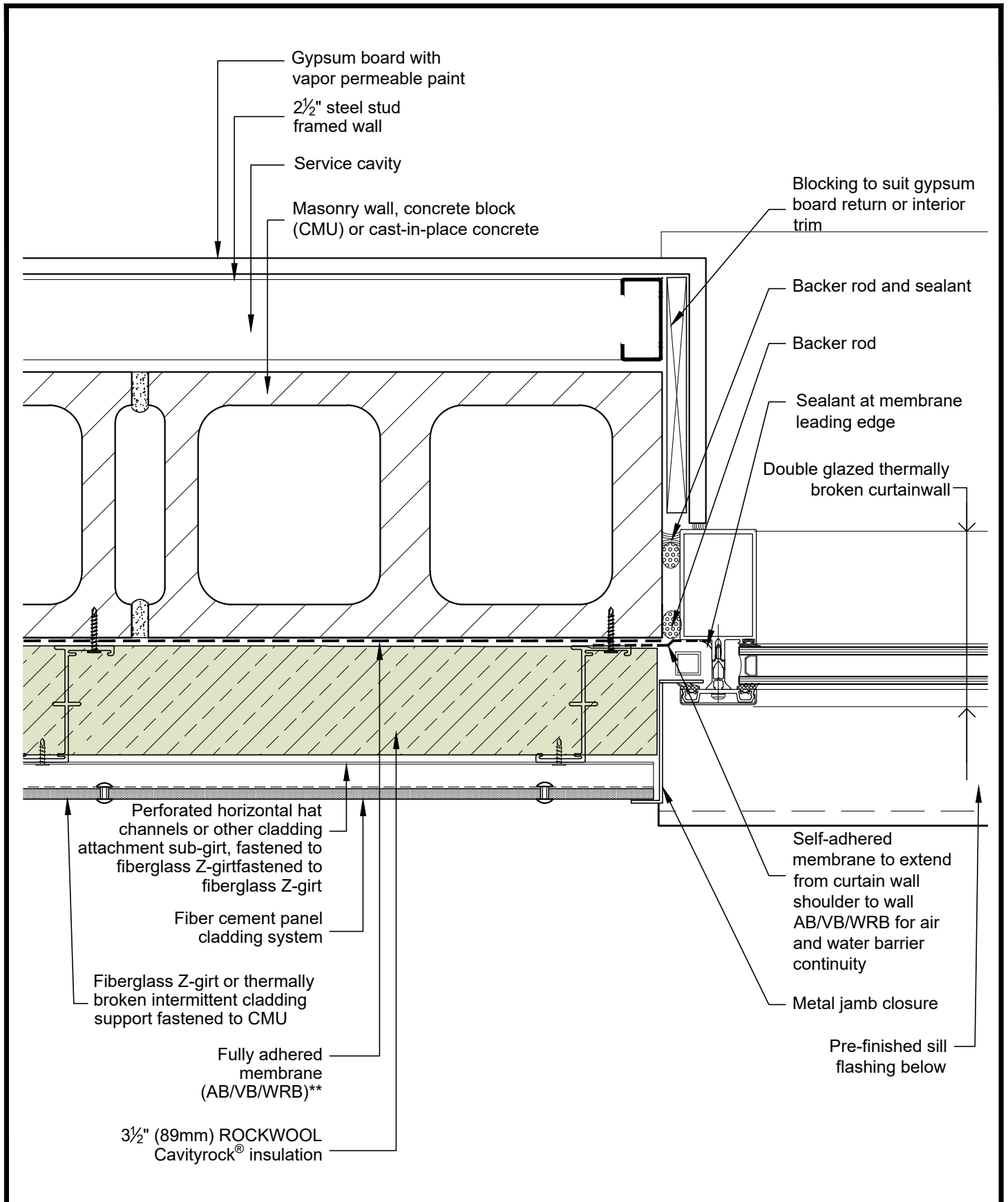
SCALE: 3" = 1'-0"

DATE: NOVEMBER 2022

November 02 2022 10:33 PM

\* For thermal performance of ROCKWOOL® products, please refer to ROCKWOOL® technical data sheets

\*\* For climate zone specific considerations for thermal, air and vapor control layer properties and requirements, please contact ROCKWOOL® Building Science for support.



**INDUSTRIAL/COMMERCIAL MASONRY WITH EXTERIOR INSULATION UP TO 4 STORIES - MEDIUM TO HEAVY CLADDING**



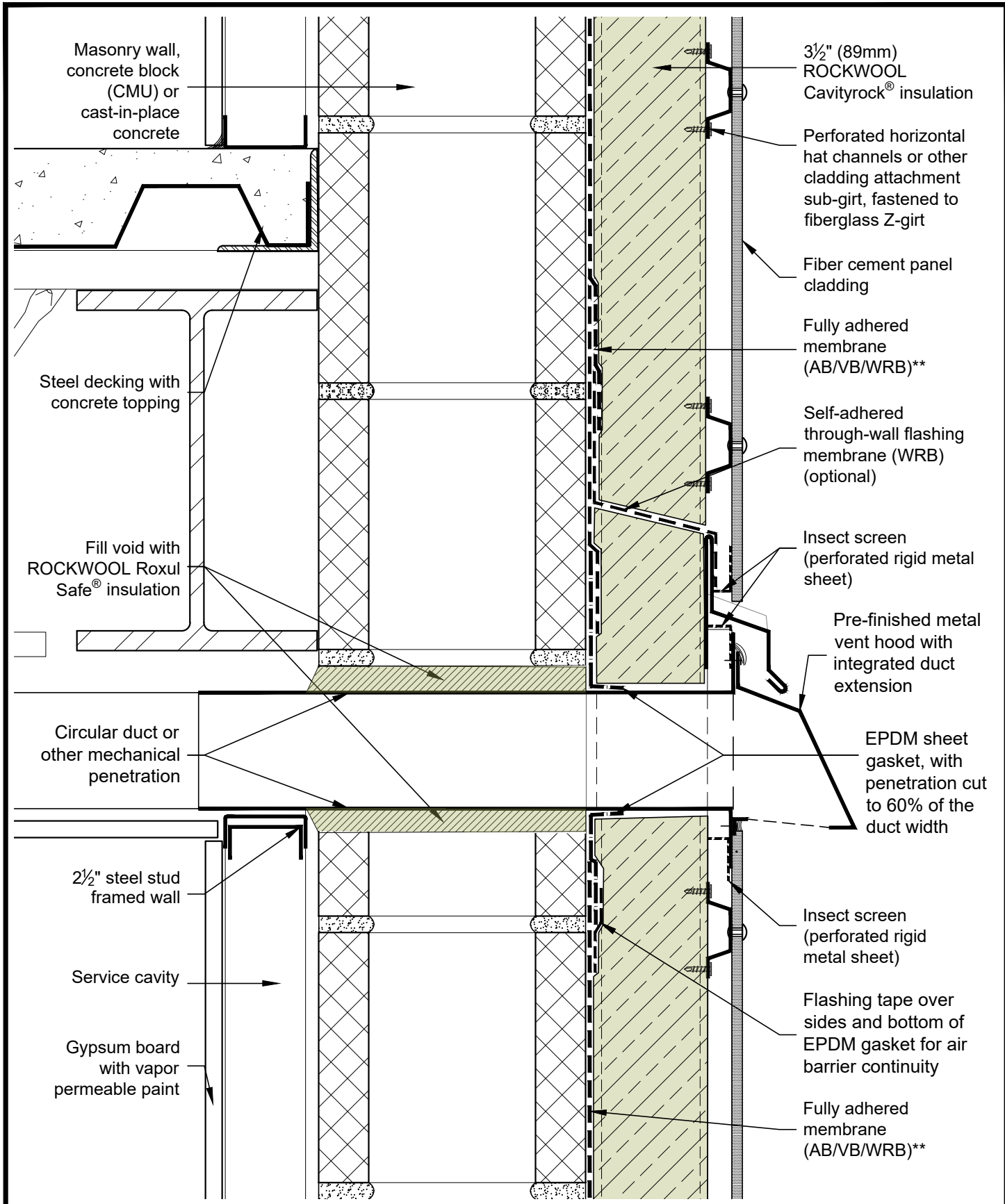
DRAWING TITLE: **TYPICAL CURTAIN WALL WINDOW JAMB**

DRAWING NO.: **Detail 06**  
 SCALE: 3" = 1'-0"  
 DATE: NOVEMBER 2022

November 02 2022 10:33 PM

\* For thermal performance of ROCKWOOL® products, please refer to ROCKWOOL® technical data sheets  
 \*\* For climate zone specific considerations for thermal, air and vapor control layer properties and requirements, please contact ROCKWOOL® Building Science for support.





**INDUSTRIAL/COMMERCIAL MASONRY WITH EXTERIOR INSULATION UP TO 4 STORIES - MEDIUM TO HEAVY CLADDING**



DRAWING TITLE:

TYPICAL MECHANICAL PENETRATION THROUGH ENCLOSURE

DRAWING NO.:

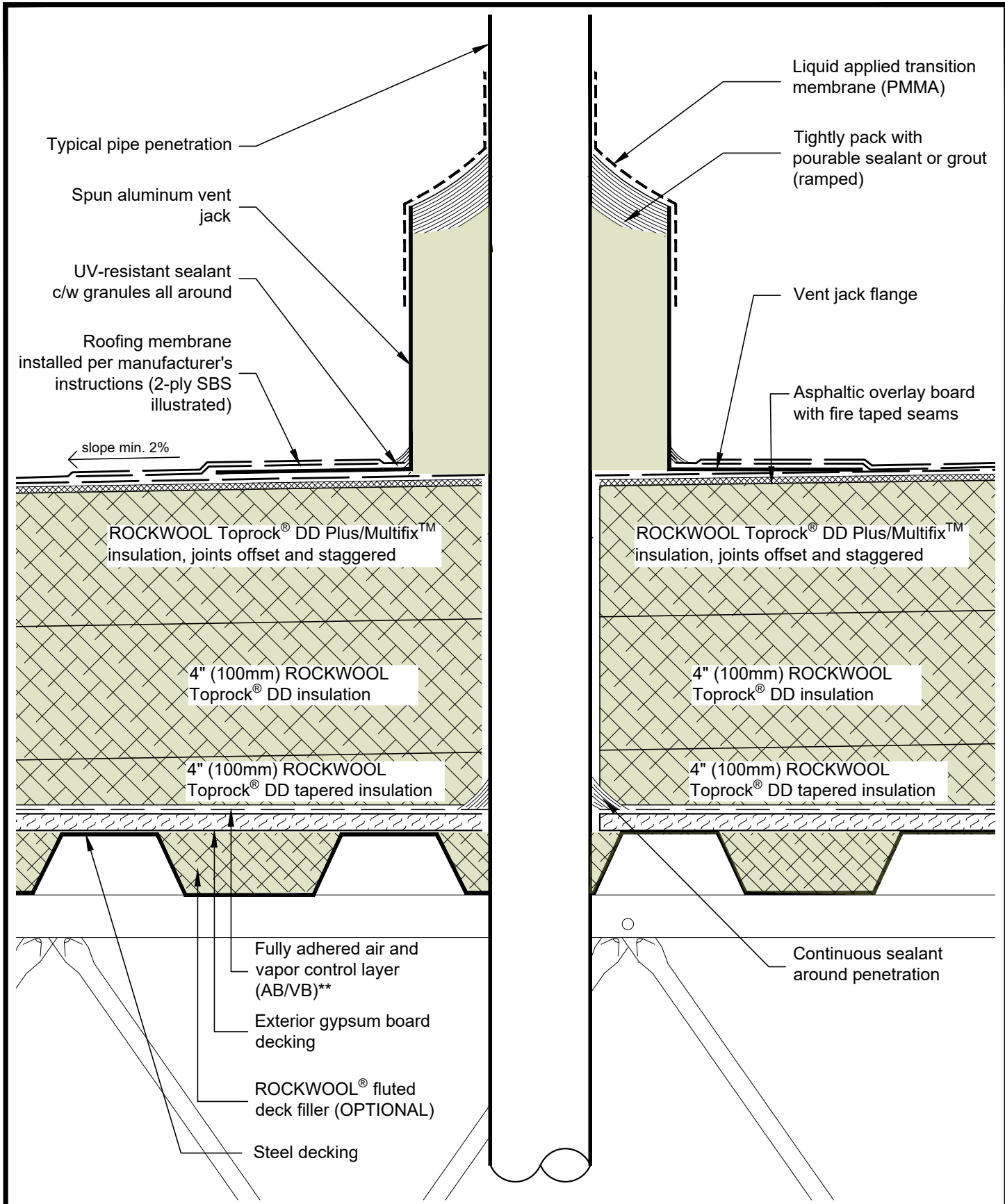
Detail 07

SCALE: 3" = 1'-0"

DATE: NOVEMBER 2022

November 02 2022 10:33 PM

\* For thermal performance of ROCKWOOL® products, please refer to ROCKWOOL® technical data sheets  
 \*\* For climate zone specific considerations for thermal, air and vapor control layer properties and requirements, please contact ROCKWOOL® Building Science for support.



November 02 2022 10:33 PM

<p><b>INDUSTRIAL/COMMERCIAL MASONRY WITH EXTERIOR INSULATION UP TO 4 STORIES - MEDIUM TO HEAVY CLADDING</b></p>			
<p>DRAWING TITLE:</p> <p><b>TYPICAL ROOF PENETRATION</b></p>	<p>DRAWING NO.:</p> <p><b>Detail 08</b></p>	<p>SCALE: 3" = 1'-0"</p>	<p>DATE: NOVEMBER 2022</p>

\* For thermal performance of ROCKWOOL® products, please refer to ROCKWOOL® technical data sheets  
 \*\* For climate zone specific considerations for thermal, air and vapor control layer properties and requirements, please contact ROCKWOOL® Building Science for support.