



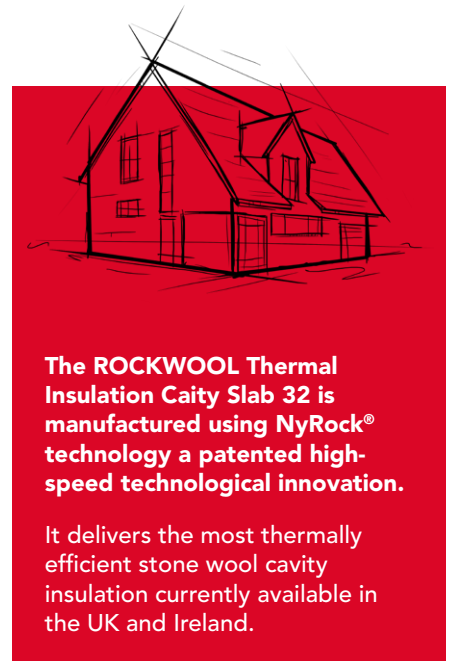
Thermal Insulation Cavity Slab 32

Thermal protection for masonry cavity walls

The ROCKWOOL Thermal Insulation Cavity Slab 32 is a full and partial fill insulation solution for use in external and party masonry cavity walls.

Suitable for use in new builds, renovations or extensions, the lightweight slab is easy to handle and simple to install proving an accurate fit against the blockwork.

- Low thermal conductivity of 0.032 W/mK.
- Non-combustible - Euroclass A1 stone wool insulation as defined in EN13501-1.
- Certified by the British Board of Agrément (BBA) and granted Certificate 22/6335.
- Stone wool provides a better fit than typical insulation, reducing gaps.
- The slab features an additive to make the product highly water repellent.
- The slabs come in a 455mm width to suit standard vertical wall tie spacings allowing a closely knitted joint with adjacent slabs.



Thermal Insulation Cavity Slab 32



APPLICATIONS

The ROCKWOOL Thermal Insulation Cavity Slab 32 is designed for use in external masonry cavity walls to deliver thermal protection in residential, extension and renovation work.

ROCKWOOL Thermal Cavity Slab 32 has been examined by the British Board of Agrément (BBA) and granted Certificate 22/6335 for use in all exposure zones for domestic and non domestic buildings that are up to 25m in height.

The NHBC accepts the use of ROCKWOOL Thermal Cavity Slab 32 other than in very severe exposure locations with fair-faced masonry, provided it is installed, used and maintained in accordance with the BBA Certificate, in relation to NHBC Standards, Chapter 6.1, External masonry walls.

PERFORMANCE

Thermal performance

ROCKWOOL Thermal Insulation Cavity Slab 32 has a thermal conductivity of 0.032 W/mK

Fire performance

ROCKWOOL Thermal Insulation Cavity Slab 32 is non-combustible achieving a reaction to fire classification of A1, as defined in EN13501-1. It is suitable for use in building of every purpose group, also acting as an effective cavity barrier when tightly fitted between masonry leaves where an insulated wall connects with an uninsulated wall cavity.

Acoustic performance

ROCKWOOL Thermal Insulation Cavity Slab 32 is made from stone wool, the non-directional fibre orientation and density means that sound waves are trapped, and vibrations dampened.

ROCKWOOL insulation retains its shape and thickness for the lifetime of the building, which means it performs acoustically decade after decade.

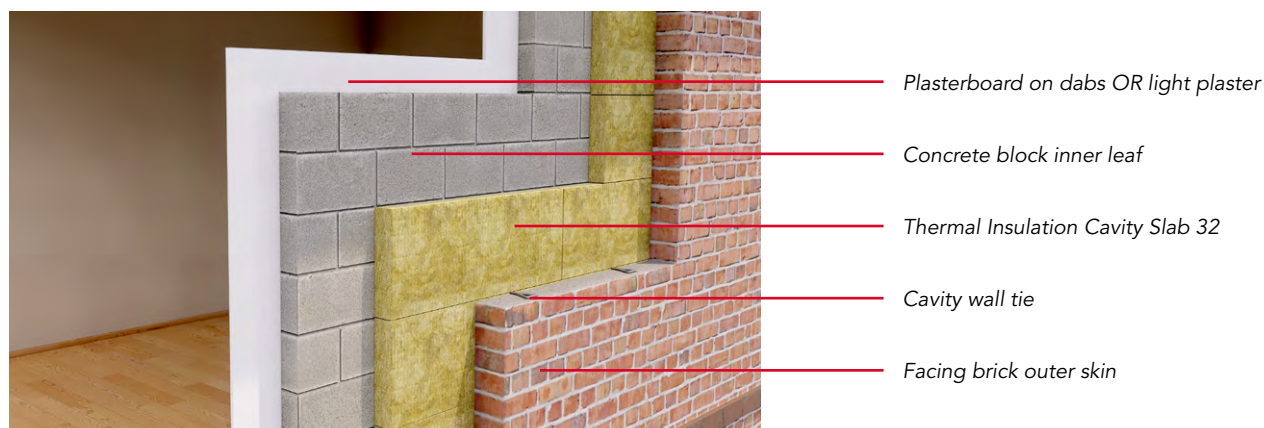
Thermal Insulation Cavity Slab 32

TYPICAL U-VALUES

Application performance - Partial fill application 1

102mm facing brick outer skin, 50mm clear cavity space, NyRock Cavity Slab 32 Partial Fill, 100mm internal concrete block (various densities) Internal finishes: light plaster or plasterboard on dab.

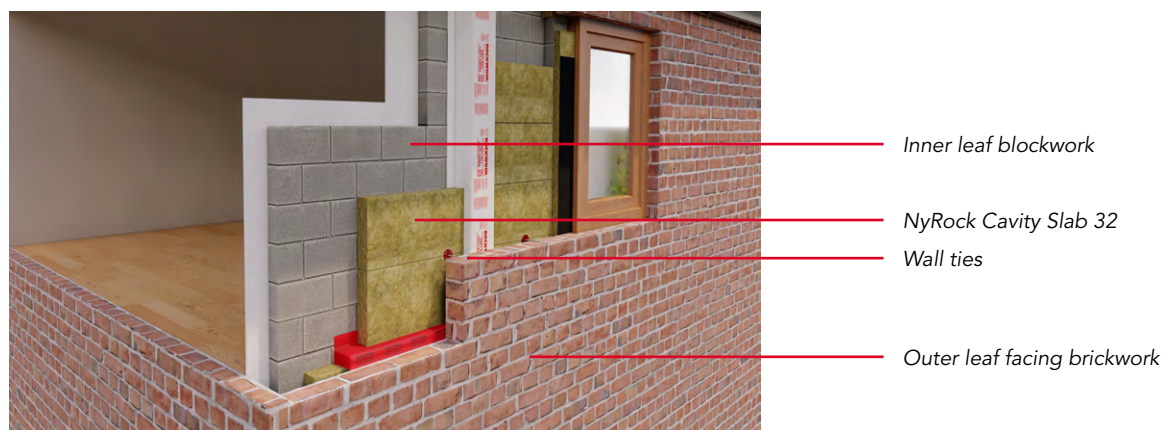
Inner block W/mK	Dense 1900-2250kg/m ³ 1.130 W/mK		Medium Dense 1400-1450kg/m ³ 0.470 W/mK		Aircrete Hi Strength 750kg/m ³ 0.190 W/mK		Aircrete Std 600kg/m ³ 0.150 W/mK	
	Light plaster	Plasterboard on dab	Light plaster	Plasterboard on dab	Light plaster	Plasterboard on dab	Light plaster	Plasterboard on dab
Cavity (mm)	U-value W/m ² K	U-value W/m ² K	U-value W/m ² K	U-value W/m ² K	U-value W/m ² K	U-value W/m ² K	U-value W/m ² K	U-value W/m ² K
100	0.28	0.27	0.27	0.26	0.26	0.25	0.25	0.24



Application performance - Partial fill application 2

Render on 100mm medium dense block outer, 50mm clear cavity space, NyRock Cavity Slab 32 partial fill, 100mm internal concrete block (medium dense or Standard Aircrete) Internal finishes: light plaster or plasterboard on dab.

Inner block W/mK	Dense 1900-2250kg/m ³ 1.130 W/mK		Medium Dense 1400-1450kg/m ³ 0.470 W/mK		Aircrete Hi Strength 750kg/m ³ 0.190 W/mK		Aircrete Std 600kg/m ³ 0.150 W/mK	
	Light plaster	Plasterboard on dab	Light plaster	Plasterboard on dab	Light plaster	Plasterboard on dab	Light plaster	Plasterboard on dab
Cavity (mm)	U-value W/m ² K	U-value W/m ² K	U-value W/m ² K	U-value W/m ² K	U-value W/m ² K	U-value W/m ² K	U-value W/m ² K	U-value W/m ² K
100	0.27	0.26	0.26	0.25	0.25	0.24	0.24	0.23



Thermal Insulation Cavity Slab 32

PRODUCT INFORMATION

Thickness	Thermal resistance m ² K/W	Width (mm)	Length (mm)	Pieces/ pack	Area/ pack (m ²)	Packs/ pallet	Pieces/ pallet
100	3.10	455	1200	4	2.18	12	48

ADDITIONAL INFORMATION

Durability

ROCKWOOL stone wool is durable by nature. Sample testing from existing buildings shows that ROCKWOOL stone wool retains its performance for at least 65 years* without being affected by compression or temperature and humidity changes.

The product is durable, rot proof, water resistant and sufficiently stable to remain effective as insulation for the life of the building.**

*FIW, Durability Project Mineral Wool (2016)

**Source: BBA certification 22/6335

Water Resistance and Moisture

The product will resist the transfer of water across the cavity. The orientation of the water repellent fibres prevent water crossing the wall construction, providing the slabs are correctly installed and sound building techniques are applied to the cavity wall construction (see our installation manual for further guidance on this). Any water penetrating the outer leaf will drain down the surface of the slab.

Condensation

ROCKWOOL stone wool insulation allows the construction to breathe, reducing the risk of condensation, which can lead to rot, mould and humidity damage.

STANDARDS AND APPROVALS

Certificate

Manufactured in accordance with BS EN 13162:2012+A1:2015 Thermal insulation products for buildings. Factory made mineral wool (MW) products.
Designation code: MW-EN13162-T4-DS(70,90)-WS-WL(P)-MU1.

Manufactured under ISO 14001 Environmental Management Systems, and ISO 9001 Quality Management Systems.

Certified by the British Board of Agrément (BBA) and granted Certificate 22/6252 as full fill and partial fill thermal insulation in external masonry cavity walls, up to 25 metres in height, in new domestic and non-domestic buildings (additional requirements apply for buildings above 12 metres).



INSTALLATION

The product must be installed in accordance with the current ROCKWOOL guidelines. For further information please visit www.rockwool.com/uk or contact our Technical Solutions Team on 01656 868490.

Thermal Insulation Cavity Slab 32

BUILDING SAFETY AND PRODUCT USE

LEGAL NOTICES

General safety requirements – Building Safety Act 2022

ROCKWOOL Limited is committed to supporting specifiers, resellers and users of ROCKWOOL products for the full life cycle of the product to comply with the obligations and responsibilities set out in the Building Safety Act 2022. With regard to the general safety requirements of the Act, ROCKWOOL Limited cannot control or foresee every situation where its products might be used. We therefore strongly advise that specifiers, resellers and users contact us where use of ROCKWOOL products is contemplated in applications different from those explicitly described in the latest, relevant ROCKWOOL product datasheets; especially in applications that can be reasonably foreseen as critical to safety.

ROCKWOOL Limited reserves the right to amend the specification of its products without notice. Changes to the ROCKWOOL manufacturing process, or to pertinent regulations, may be reflected in changes to tested and certified product performance. Whilst ROCKWOOL Limited endeavours to keep its publications up to date, readers will appreciate that between publications there may be pertinent changes in the law or other developments affecting the accuracy of the information contained in our publications.

ROCKWOOL Limited does not accept responsibility for the consequences of using (including testing or certifying) its products in applications different from those explicitly described in the relevant ROCKWOOL product datasheets. Expert advice should be sought, and ROCKWOOL Limited should be contacted, where such different use is contemplated, or where the extent of any use described by ROCKWOOL Limited is in doubt.

The ROCKWOOL Trademark

ROCKWOOL® - our trademark

The ROCKWOOL trademark was initially registered in Denmark as a logo mark back in 1936. In 1937, it was accompanied with a word mark registration; a registration which is now extended to more than 60 countries around the world.

The ROCKWOOL trademark is one of the most important assets of the ROCKWOOL Group, and is therefore well-protected and defended by ROCKWOOL throughout the world.

If you require permission to use the ROCKWOOL logo for your business, advertising or promotion, you must apply for a Trade Mark Usage Agreement.

To apply, write to:
marketcom@rockwool.com

Trademarks

Registered trademarks of the ROCKWOOL Group include but are not limited to:

ROCKWOOL®, RockClose®, RainScreen Duo Slab®, HardRock®, RockFloor®, Flexi®, RockFall®, FirePro®, DuctRock®, BeamClad®, NyRock®

© ROCKWOOL 2023.
All rights reserved.

Photography and illustrations

The product illustrations are the property of ROCKWOOL Limited and have been created for indicative purposes only.

Unless indicated below, the photography and illustrations used in this guide are the property of ROCKWOOL Limited. We reserve all rights to the usage of these images.

If you require permission to use ROCKWOOL images, you must apply for a Usage Agreement.

To apply, write to:
marketcom@rockwool.com

Thermal Insulation Cavity Slab 32

ROCKWOOL stone wool - safe to install and live alongside

There are no hazardous classifications associated with stone wool insulation manufactured by ROCKWOOL-UK according to EU REACH and UK REACH regulations on health and the environment.

ROCKWOOL safe use instruction sheets and material safety data sheets (where applicable) can be downloaded [here](#).



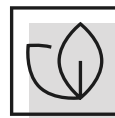
Sustainability

ROCKWOOL products are used to enrich modern living, creating safer, healthier and more climate-resilient communities.

We transform abundant, natural volcanic rock into stone wool insulation products that are used to reduce energy demand, lower fuel bills and help address society's climate change challenges.

ROCKWOOL stone wool insulation is recyclable and can be transformed into new ROCKWOOL products. Please contact us for details of how we can work together to recycle waste ROCKWOOL stone wool material that may be generated during on-site installation.

Our annual sustainability reports, which set out progress against our sustainability goals, and further details of the positive impacts of using our products can be found on our website.



Environment

ROCKWOOL takes a fact-based, auditable approach to documenting our progress in maximising our products' positive impact and minimising the effect our operations have on the environment, backed by third-party references and methodologies. Further details can be found online in our annual sustainability report.

Our high-tech production process uses filters, pre-heaters, after-burners and other cleaning and collection systems that help to reduce the effects of our manufacturing operations on the environment.

ROCKWOOL stone wool insulation does not contain (and has never contained) gases that have ozone depletion potential (ODP) or global warming potential (GWP).

