



FirePro® FireStop Compound

Firestop solution for cable, pipe and duct penetrations

FireStop Compound is a specially formulated gypsum-based compound, which is mixed with water to be trowelled or poured around service penetrations.

- Inhibits smoke
- Acoustic barrier
- Suitable for sealing around most types of service penetrations
- Load bearing capability
- Simple installation
- No smoke emission
- Unaffected by humidity



FirePro® FireStop Compound



APPLICATIONS

- Re-instating the fire resistance of wall and floor constructions
- Load bearing floors
- Wall penetrations
- Load bearing seals around unsupported fire dampers

FirePro® FireStop Compound

PERFORMANCE

Acoustic performance

Thickness of compound (mm)	R _w (C;C _v) - Specimen Only
50	40 (-1;-3) dB
100	44 (0;-3) dB
150	52 (-1;-6) dB

Test Reference: MTP/F16066/P003, P004, P007, P008, P009 and P010

For specific information on acoustic performance please contact ROCKWOOL Technical Solutions on 01656 868490 or technical.solutions@rockwool.com.

Load bearing capability

Thickness of compound (mm)	Max. load bearing area free of services
75	500 x 500mm
100	750 x 750mm

Openings with a clear area larger than 750 x 750mm need to be reinforced as outlined within the installation section. For further information on the reinforcement of openings greater than 750 x 750mm, please contact ROCKWOOL Technical Solutions on 01656 868490 or technical.solutions@rockwool.com.

Fire performance

For detailed information on fire performance, please contact the ROCKWOOL Technical Solutions Team: technical.solutions@rockwool.com.

PRODUCT INFORMATION

Property	Description
Pack size	22kg bag
Fire resistance	Up to 6 hours*
Load bearing capacity	Up to 2.5KN
Acoustic performance	Up to 52dB
Shelf life	6 months

STANDARDS AND APPROVALS

Certificate
FirePro® FireStop Compound has been tested to BS 476 Part 20:1987
This product has been authorised for use in LUL surface and sub-surface premises when installed in accordance with this datasheet - please refer to the LUL Approved Product Register website www.LU-apr.co.uk for specific details.

FirePro® FireStop Compound

INSTALLATION

Floor installations

In floors, a permanent shuttering made from 50mm ROCKWOOL slab (minimum density 140kg/m³) is cut and friction fitted between services and the edges of the floor slab. FireStop Compound is then trowelled over the shutter to a depth of 25mm thick. This is allowed to cure. Further FireStop Compound is then mixed to a pouring grade and tops the seal up to the required depth (See Figure 1).

FireStop Compound sets in 30-45 minutes and is capable of accommodating light foot traffic in approximately 72 hours.

Installation instructions – floors

1. Mix a bag of compound to 10 litres of water (3:1) by volume. Vary to suit site conditions.
2. Set the shuttering into the opening ensuring a tight fit so that once the required depth of compound is installed it finishes flush with the floor slab/screed unless otherwise specified.
3. Mix and pour compound until the required thickness is achieved.

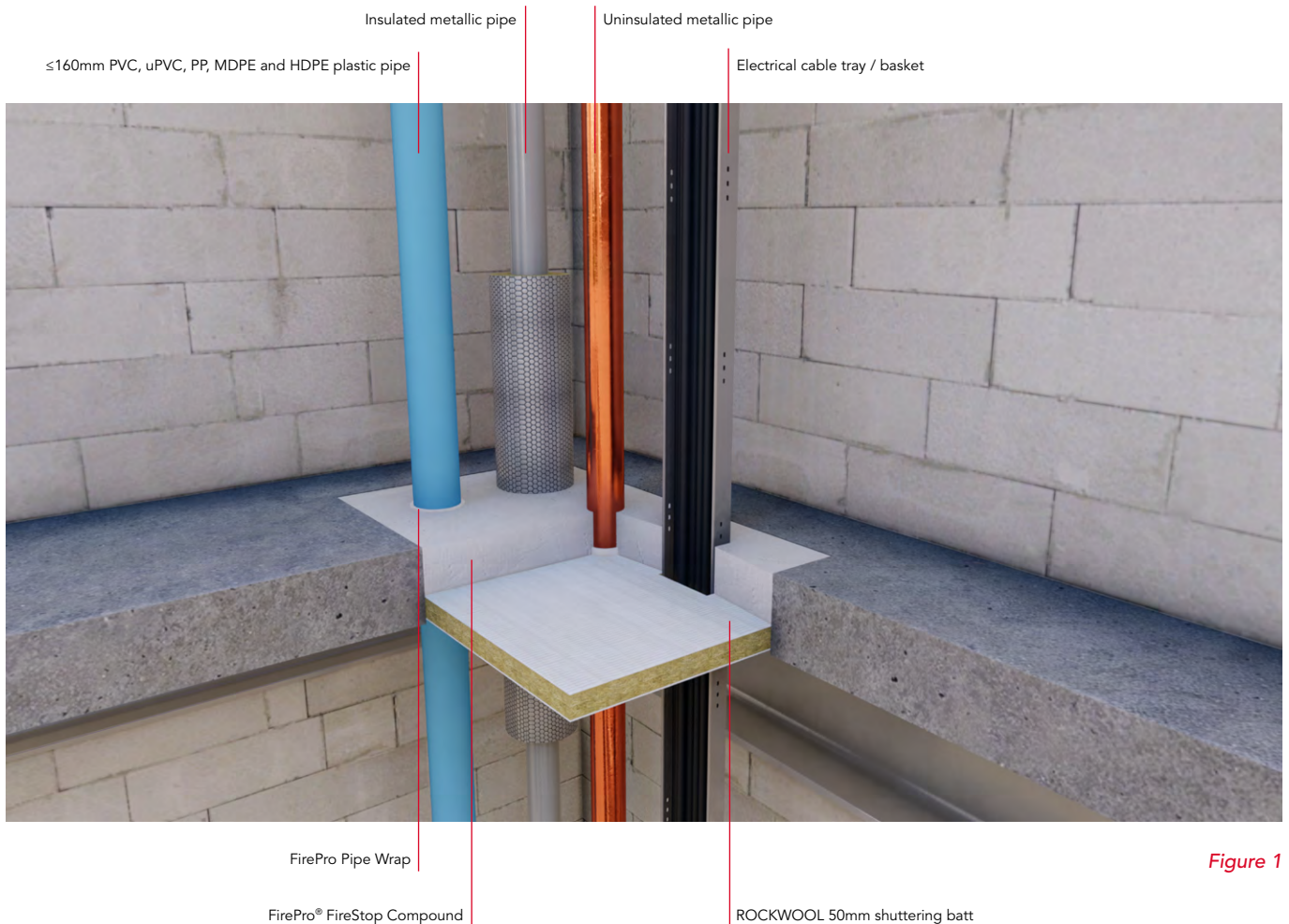


Figure 1

FirePro® FireStop Compound

Wall installations

In wall applications (See Figure 2), FireStop Compound is mixed into a stiff consistency for trowelling into openings.

Installation instructions – walls

1. Mix a bag of compound to 10 litres of water (3:1) by volume. Vary to suit site conditions.
2. Apply the compound using the specified shuttering method (See Figure 3).
3. Trowel the compound starting at the base of the opening ensuring the correct thickness of material is installed. Work progressively towards the top of the opening until the barrier is complete. If the shuttering panel is set at the centre, repeat the process on the other side.

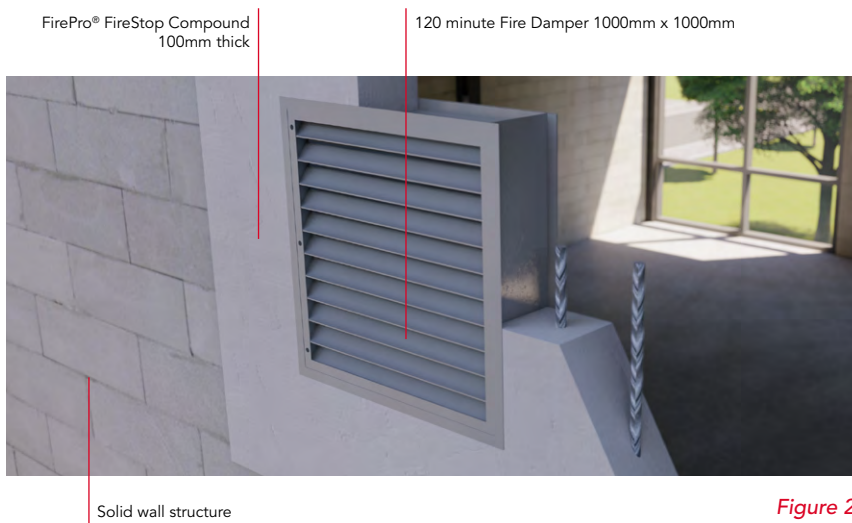


Figure 2

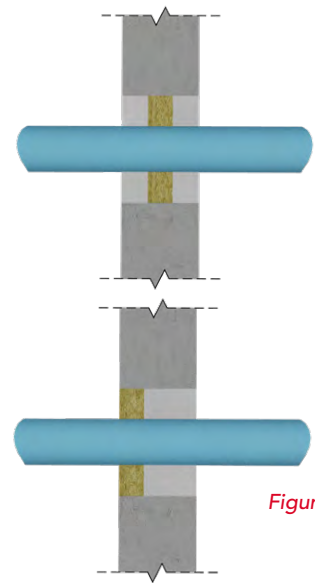


Figure 3

Coverage

Thickness of compound (mm)	Number of bags/m ²
75	3.15
100	4.20
150	6.30

The above calculations are approximate and based on 22kg bags.
The coverage rates shown do not take into account the area of service penetrations within the aperture.

SPECIFICATION CLAUSES

FirePro® FireStop Compound is associated with the following NBS clauses:

P12 Fire stopping systems
340 Intumescent Mortar

SUPPORTING INFORMATION

For further information relating to any aspect of the FIREPRO range, please refer to the applicable ROCKWOOL standard details at www.rockwool.com/uk or contact the ROCKWOOL technical solution team on 01656 868490 or technical.solutions@rockwool.com.

FirePro® FireStop Compound

BUILDING SAFETY AND PRODUCT USE

LEGAL NOTICES

General safety requirements – Building Safety Act 2022

ROCKWOOL Limited is committed to supporting specifiers, resellers and users of ROCKWOOL products for the full life cycle of the product to comply with the obligations and responsibilities set out in the Building Safety Act 2022. With regard to the general safety requirements of the Act, ROCKWOOL Limited cannot control or foresee every situation where its products might be used. We therefore strongly advise that specifiers, resellers and users contact us where use of ROCKWOOL products is contemplated in applications different from those explicitly described in the latest, relevant ROCKWOOL product datasheets; especially in applications that can be reasonably foreseen as critical to safety.

ROCKWOOL Limited reserves the right to amend the specification of its products without notice. Changes to the ROCKWOOL manufacturing process, or to pertinent regulations, may be reflected in changes to tested and certified product performance. Whilst ROCKWOOL Limited endeavours to keep its publications up to date, readers will appreciate that between publications there may be pertinent changes in the law or other developments affecting the accuracy of the information contained in our publications.

ROCKWOOL Limited does not accept responsibility for the consequences of using (including testing or certifying) its products in applications different from those explicitly described in the relevant ROCKWOOL product datasheets. Expert advice should be sought, and ROCKWOOL Limited should be contacted, where such different use is contemplated, or where the extent of any use described by ROCKWOOL Limited is in doubt.

The ROCKWOOL Trademark

ROCKWOOL® - our trademark

The ROCKWOOL trademark was initially registered in Denmark as a logo mark back in 1936. In 1937, it was accompanied with a word mark registration; a registration which is now extended to more than 60 countries around the world.

The ROCKWOOL trademark is one of the most important assets of the ROCKWOOL Group, and is therefore well-protected and defended by ROCKWOOL throughout the world.

If you require permission to use the ROCKWOOL logo for your business, advertising or promotion, you must apply for a Trade Mark Usage Agreement.

To apply, write to:
marketcom@rockwool.com

Trademarks

Registered trademarks of the ROCKWOOL Group include but are not limited to:

ROCKWOOL®, RockClose®, RainScreen Duo Slab®, HardRock®, RockFloor® Flexi®, RockFall®, FirePro®, DuctRock®, BeamClad®, NyRock®

© ROCKWOOL 2023.
All rights reserved.

Photography and illustrations

The product illustrations are the property of ROCKWOOL Limited and have been created for indicative purposes only.

Unless indicated below, the photography and illustrations used in this guide are the property of ROCKWOOL Limited. We reserve all rights to the usage of these images.

If you require permission to use ROCKWOOL images, you must apply for a Usage Agreement.

To apply, write to:
marketcom@rockwool.com

HEALTH & SAFETY

A Material Safety Data Sheet is available and can be downloaded from www.rockwool.com/uk to assist in the preparation of risk assessments, as required by the Control of Substances Hazardous to Health Regulations (COSHH)