

ROCKWOOL

Insulation contribution

– to LEED v4.1 BUILDING DESIGN
AND CONSTRUCTION



How ROCKWOOL stone wool contribute to your certification

The construction materials used in your building can have a large impact on your certification. In order to earn points it is important to choose materials that meet certain criteria within health, safety and the environmental impact throughout their life cycle.

In this document we have highlighted all areas where you are awarded points when using ROCKWOOL solutions. All relevant documentation needed to complete your certification scheme can be found in our documentation assistant: docassist.rockwool.com

At ROCKWOOL, we transform volcanic rock into stone wool products that address many of society's biggest climate challenges. Our hope is that our solutions can help enrich modern living so that we can build safer, healthier, and more climate resilient communities that can stand the test of time. For more than 80 years we have delivered quality insulation to buildings all around the world and our durability is well documented. Even after more than 65 years, our products perform as well as the day they were installed.

Reference document:

LEED v4.1 DB + C
Version: 4.1
Published: July 29, 2022

March 10, 2023

Approved: CJK

Market scope: Nordics

Product scope: ROCKWOOL insulation
products

Documentation Assistant

To support your documentation requirements, ROCKWOOL has collected all available sustainability documentation on docassist.rockwool.com for direct download as full packages or a single files.

Documents for download	LEED v4.1 BD+C	
Recycling: Construction site returns		MR Construction and Demolition Waste Management
		MR Sourcing of Raw Materials Material efficiency
Recycling: Demolition and renovation returns		MR Construction and Demolition Waste Management Responsible construction practices
		MR Sourcing of Raw Materials Hazardous substances
ROCKWOOL Safe Handling Instructions		
Environmental Product declaraton (EPD)		EA Optimize Energy Performance (Er vi enige i Rikkens observation
		MR Building Life-Cycle Impact Reduction
		MR Environmental Product Declarations
Product health – Emissions certificates		MR Low-Emitting Materials
Product health – Ingredients		MR Material Ingredients
Safety Datasheets (ROCKWOOL sealants)		MR Material Ingredients
Declaration of Performance (DOP)		EA Minimum Energy Performance
		EA Optimize Energy Performance
		EQ Thermal Comfort
		EQ Acoustic Performance
Responsible sourcing (listet in current document)		
Manuf. Declaration: Recycled content (listed in current document)		MR Sourcing of Raw Materials

Support: tools, guides and technical service

ROCKWOOL offers a suite of tools and guides that can support the certification process, eg:

- Detail drawings (CAD)
- Installation guides
- Design guides
- Energy calculation programs
- Material calculators for roofs and systems

If you are missing any information, please reach out ROCKWOOL technical service (teksupport@rockwool.com), who will seek to guide you to the required information.

All guides and tools are free and can be downloaded directly via the local ROCKWOOL webpage.

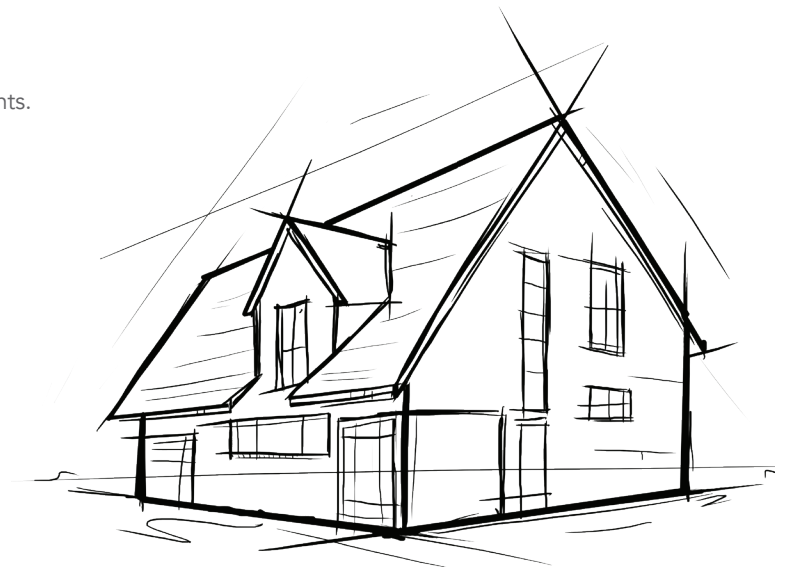
Website	Contact details technical service
www.rockwool.dk	rwts@rockwool.dk

How ROCKWOOL stone wool insulation can contribute to LEED v4.1 BD+C credits

LEED BD+C covers new construction or major renovations within the following segments:

- New Construction and Major Renovation
- Core and Shell Development
- School
- Retail
- Data Centers
- Warehouses and Distribution Centers
- Hospitality
- Healthcare

Applicability of credits and points will vary across segments.



LEED v4.1 credits and where ROCKWOOL stone wool insulation can support		Available points
IP Credit: Integrative Process		
Integrative Process	<p>ROCKWOOL stone wool insulation can support a contribution to a broad of sustainability objectives. ROCKWOOL stone wool with a constant lambda value, years after years. Rockwool stone wool insulation contributes to maintaining thermal comfort of any building and corresponding low operation energy requirements.</p> <p>Furthermore, the environmental impact of ROCKWOOL stone wool insulation is declared with 3rd party verified product specific EPDs according to the updated European standard EN 15804+A2:2019 and cover the full life cycle from cradle to grave. (A1-A5, C1-C4 and D).</p> <p>With our EPD generator we can make product specific EPDs per request.</p> <p>ROCKWOOL product range, on average, perform a 50% reduced greenhouse gas emission, throughout the lifecycle of the product, compared with the standardized database for ecological evaluation of building materials (ökobaudat).</p>	1
Energy and atmosphere (EA)		
Minimum Energy Performance	ROCKWOOL stone wool with a constant lambda value, years after years. Rockwool stone wool insulation contributes to maintaining thermal comfort of any building and corresponding low operation energy requirements.	Required
Optimize Energy Performance	<p>ROCKWOOL stone wool insulation can support a contribution to a broad of spectrum of solution to reduce a buildings energy consumption and achieve a low environmental impact. ROCKWOOL stone wool with a constant lambda value, years after years. Rockwool stone wool insulation contributes to maintaining thermal comfort of any building and corresponding low operation energy requirements.</p> <p>A broad range of freely available energy optimisation tools are available for download via local rockwool webpages.</p> <p>The environmental impact of ROCKWOOL stone wool insulation is declared with 3rd party verified product specific EPDs according to the updated European standard EN 15804+A2:2019 and cover the full life cycle from cradle to grave. (A1-A5, C1-C4 and D).</p> <p>With our EPD generator we can make product specific EPDs per request.</p> <p>ROCKWOO product range, on average, perform a 50% reduced greenhouse gas emission, throughout the lifecycle of the product, compared with the standardized database for ecological evaluation of building materials (ökobaudat).</p>	1-20
Enhanced commissioning	<p>Building Enclosure Commissioning</p> <p>Documentation available for supporting the inclusion of ROCKWOOL stone wool insulation for the commissioning process of the building's thermal envelope.</p>	2
Materials and resources (MR)		
Building life-cycle impact reduction	ROCKWOOL 3rd party verified product specific EPDs are available via https://www.rockwool.com/no/ or at EPD-Norway. ROCKWOOLs EPDs are made according to the updated European standard EN 15804+A2:2019 & ISO 14025, and cover the full life cycle from cradle to grave. (A1-A5, C1-C4 and D).	1-6
Environmental product declarations	<p>With our EPD generator we can make product specific EPDs per request.</p> <p>ROCKWOOL product range, on average, perform a 50% reduced greenhouse gas emission, throughout the lifecycle of the product, compared with the standardized database for ecological evaluation of building materials (ökobaudat).</p>	1-2

LEED v4.1 credits and where ROCKWOOL stone wool insulation can support		Available points
Sourcing of raw materials	<p>ROCKWOOL operates a circular extended producer responsibility program throughout the Nordics, whereby all returned material will be recycled into new ROCKWOOL stone wool products.</p> <p>The average ROCKWOOL stone wool product contains 22% recycled content, of which 17% is content is reclaimed pre-consumer and the remaining 5% is post-consumer. ROCKWOOL operates four factories in the Nordic region:</p> <p>Denmark:</p> <ul style="list-style-type: none"> • Doense • Vamdrup <p>Norway:</p> <ul style="list-style-type: none"> • Moss • Trondheim 	1-2
Material ingredients	<p>ROCKWOOL stone wool insulation contains no substances found on the Authorization List – Annex XIV, the Restriction list – Annex XVII and the SVHC candidate list.</p> <p>Publicly available material inventory available for all ROCKWOOL insulation products</p>	1-2
Construction and demolition waste management	<p>The ROCKWOOL Rockcycle return service is offered throughout the Nordics, whereby all returned material will be recycled into new ROCKWOOL stone wool products. The Rockcycle return service is both available for stone wool insulation obtained through demolition and off-cuts for construction. Furthermore, Rockcycle return service can also be applied as a take-back scheme for the ROCKWOOL stone wool insulation which has been build into the newly constructed building.</p>	1-2
Indoor environmental quality (EQ)		
Minimum acoustic performance	<p>ROCKWOOL stone wool has an open and porous structure, which allows the stone wool to absorb sound, dampen unwanted noise and is an excellent choice for use in sound insulation construction. ROCKWOOL Insulation products has a density in the range of: (Indsæt densitet)</p> <p>ROCKWOOL also provides insulation for HVAC-systems, assisting in reducing noise pollution from the buildings technical installations.</p>	Prerequisite
Low-emitting materials	<p>Stone wool insulation from ROCKWOOL intended for use inside the building envelope is certified low emission according to M1.</p>	1-3
Thermal comfort	<p>With a constant lambda value, year after year, ROCKWOOL stone wool insulation contributes to the thermal comfort of any building.</p>	1

Disclaimer

This document has been compiled for use as supporting documentation for application for a building certification scheme. ROCKWOOL cannot not guarantee that the presented documentation document will be accepted by the certification owner.

Manufactures declaration:

Recycled content of
ROCKWOOL stone
wool insulation

Average:

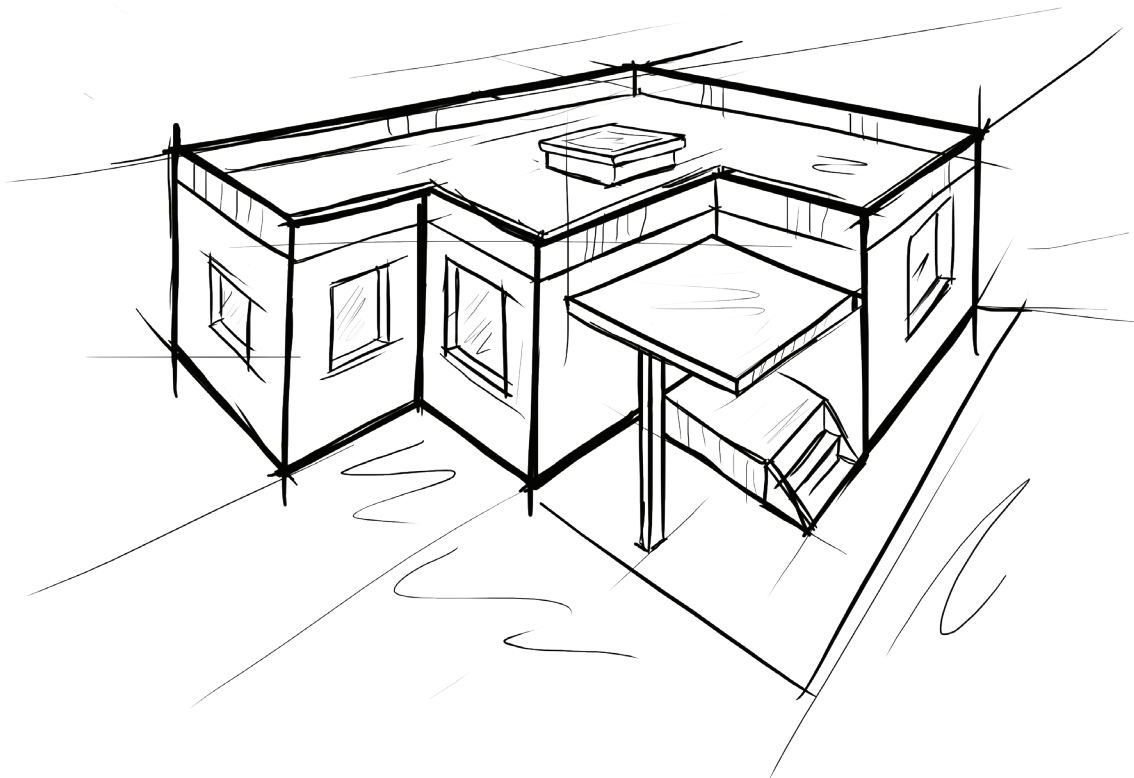
22%

Post consumer:

5%

Pre consumer:

17%



3521

Certifikat nr. 137-5



DANCERT

TEKNOLOGISK INSTITUT

Dancert A/S
Gregersensvej 1
2630 Taastrup
Tlf. +45 72202160
info@dancert.dk
www.dancert.dk
CVR nr. DK-29512094

Dancert attesterer herved at

Miljøledelsessystemet

hos

ROCKWOOL Danmark A/S

Hovedgaden 501
DK-2640 Hedehusene

på følgende adresse(r)

AS ROCKWOOL, Værlegt. 56, Postbox 55, NO-1531 Moss

AS ROCKWOOL, Leangen Alle 1, NO-7044 Trondheim

ROCKWOOL Danmark A/S, Industrivej 9-11, DK-6580 Vamdrup

ROCKWOOL Danmark A/S, Rockwoolvej 2, Øster Doense, DK-9500 Hobro

er i overensstemmelse med kravene i

DS/EN ISO 14001:2015 Miljøledelsessystemer - Krav og vejledning

Gyldighedsområde:

Udvikling, produktion, salg og levering af mineraluld

Certifikatet er gyldigt fra 05-05-2022 til 17-06-2024

Certifikatets gyldighed kan verificeres på www.dancert.dk

Certifikatet blev udstedt første gang 17-11-1997

For Dancert

Jørgen Baadsgaard-Jensen
Adm. direktør



3516

Certificate no. 004-SDG-5-137



DANCERT

**DANISH TECHNOLOGICAL
INSTITUTE**

Dancert A/S
Gregersensvej 1
DK-2630 Taastrup
Phone +45 72202160
info@dancert.dk
www.dancert.dk
CVR no. DK-29512094

Dancert certifies that

Thermal insulation products for buildings - Factory made mineral wool products

delivered by

ROCKWOOL Danmark A/S

Hovedgaden 501
DK-2640 Hedehusene

and produced in the manufacturing plant(s)

AS ROCKWOOL, Vaerlegt. 56, Postbox 55, NO-1531 Moss

AS ROCKWOOL, Leangen Alle 1, NO-7044 Trondheim

ROCKWOOL Danmark A/S, Industrivej 9-11, DK-6580 Vamdrup

ROCKWOOL Danmark A/S, Rockwoolvej 2, Øster Doense, DK-9500 Hobro

complies with the requirements of

EN 13162:2012+A1:2015 Thermal insulation products for buildings - Factory made mineral wool (MW) products - Specifications

EN 13172:2012 Thermal insulating products - Evaluation of conformity

Keymark Scheme rules for thermal insulation, version 2.1 Insulation Keymark Scheme for Thermal Insulation Products, Revision 2.1, 23 september 2019

The conformity is assessed on the basis of the assessment activities described by Dancert's supplementary regulations for product certification for the actual product category.

The performance and/or classification of the products is specified at www.dancert.com

The certificate is valid from 05-05-2022 through 14-07-2023

The validity of the certificate can be verified at www.dancert.com

This certificate was first issued on 18-05-2002

For Dancert

Jørgen Baadsgaard-Jensen
CEO



DECLARATION

Code of Conduct for Suppliers to the ROCKWOOL Group

The ROCKWOOL Group is committed to running its business on ethically and environmentally-sound principles. The ROCKWOOL Group wishes to ensure that we act responsibly in accordance with ethical, legal and international standards of behaviour and we endeavour to continuously improve our social performance.

The ROCKWOOL Group supports the United Nations Universal Declaration of Human Rights and the ten universal principles defined in the UN Global Compact relating to human rights, labour environment and anti-corruption.

The ROCKWOOL Group expects suppliers to uphold similar standards, ideally described in a CSR policy. This Code is designed to explain our expectations to our suppliers in more detail.

Compliance with Applicable Laws and Standards

The ROCKWOOL Group expects suppliers to comply with all international, national and local laws and standards relating to employment, environmental, purchasing and manufacturing practises.

Employment Practices

The ROCKWOOL Group wishes to ensure that the working practices of our suppliers towards their employees regarding such issues as equal opportunities, Trade Union recognition and fair employment terms comply with or exceed national and internationally accepted standards. The ROCKWOOL Group expects all suppliers to strive towards reducing any potential risk to their employees and to provide them with safe and healthy working conditions.

No supplier must, under any circumstances, be involved in the use of child labour.

Environmental Practices

The ROCKWOOL Group expects suppliers to comply with the environmental standards and regulations relevant to their business and to practice sound environmental principles in their operations.

The ROCKWOOL Group has adopted the ICC “Business Charter for Sustainable Development – Principles for Environmental Management”, which identifies responsibilities, requires an Environmental Officer to be appointed, expects companies to have an Environmental Management System with specific 3 year plans and expects all new machinery to be environmentally risk assessed before coming into operation. The ROCKWOOL Group encourages suppliers to follow these principles.

Supply Chain Practices

The ROCKWOOL Group expects suppliers to enforce these guidelines towards their suppliers. ROCKWOOL also reserves the right to audit any sub-supplier.

Purchasing Ethics

Employees of the ROCKWOOL Group, irrespective of their position in the organisation, will not accept any gift from any supplier (either directly or indirectly) that could appear to influence their decisions on sourcing and contracting issues.

The ROCKWOOL Group expects suppliers to ensure that employees, sub-suppliers and sub-contractors are not only aware of these guidelines, but are also committed to uphold the principles set out above.

Bribery

Bribery is defined as occurring when a person offers, gives or promises, directly or indirectly, any financial or other advantage to a private (e.g. business partner) or public industry (e.g. Public Official) in exchange for improperly performing a relevant function or activity. In addition, not only the act of bribing but also the act of being bribed is unacceptable defined as a person requesting, accepting or agreeing to accept a financial or other advantage, in exchange for improperly performing such a function or activity. The ROCKWOOL Group finds bribery unacceptable and expects suppliers to officially and explicitly take a stand against bribery.

Compliance

Compliance with these guidelines is seen as the basis of a good, constructive and professional working relationship between companies. Any deviation from these guidelines could detrimentally affect this relationship and the ROCKWOOL Group reserves the right to cancel the contract in case of any violation of this Code of Conduct.

Acceptance

By ticking off the acceptance box when registering as a supplier to ROCKWOOL Group, you agree to abide by this Code of Conduct.

You further accept that the ROCKWOOL Group is entitled to carry out audits with access to relevant information.



ROCKWOOL Danmark A/S

Hovedgaden 501
2640 Hedehusene
info@rockwool.dk
ROCKWOOL.dk

Brochuren giver en generel orientering om ROCKWOOL produkternes anvendelsesområder. Løsningerne viser ikke alle detaljer, der kan være nødvendige i projekteringsarbejdet. ROCKWOOL Danmark A/S kan ikke tage ansvar for de opnåede resultater ved brug af de forskellige produkter, da forbrugernes endelige anvendelse er uden for vores kontrol. ROCKWOOL Danmark A/S tager forbehold for eventuelle trykfej i brochuren.