

HARDROCK® UB34

Tools required

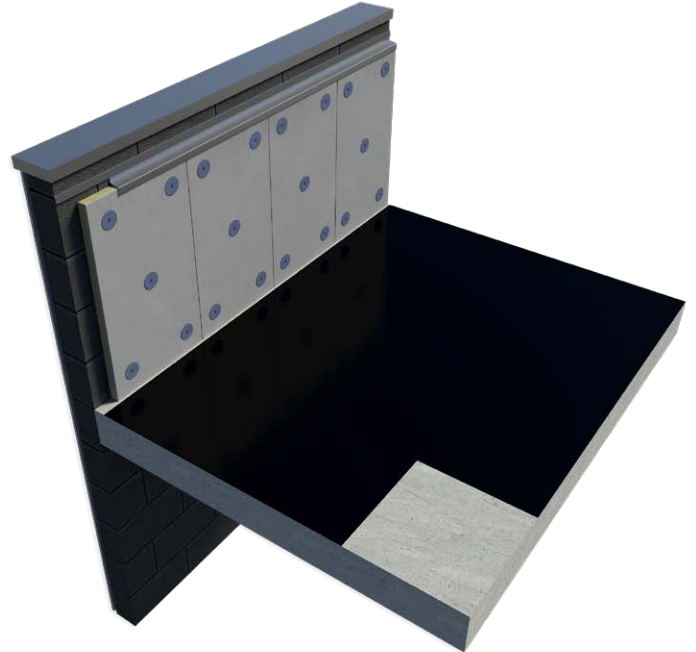
- Fine toothed saw or panel saw
- Tape measure

Fixing and application

Installation will vary depending on the roof system being installed. For specific guidance please refer to the relevant waterproofing manufacturer.

At a minimum we recommend there is always at least one centrally located insulation fixing per board.

When installed, provided that the top surface is protected by a sill or cover, HARDROCK® UB34 is suitable for long term exposure - for example when used in conjunction with an inverted roof system.



Health & safety

The mechanical effect of fibres in contact with skin may cause temporary itching.



Cover exposed skin
When working in unventilated area wear disposable face mask.



Clean area using vacuum equipment.



Waste should be disposed of according to local regulations.



Rinse in cold water before washing.



Ventilate working area if possible.



Wear goggles when working overhead.