

Comfortboard® 110

Exterior Continuous Insulation



ROCKWOOL Comfortboard® 110 is a rigid, high-density, noncombustible stone wool insulation board designed for use as an exterior continuous insulation in commercial applications.

Thermally efficient, moisture resistant and vapor permeable, Comfortboard® 110 is a non-structural external sheathing insulation that creates high-performance wall assemblies to improve the energy efficiency and fire resilience of buildings.

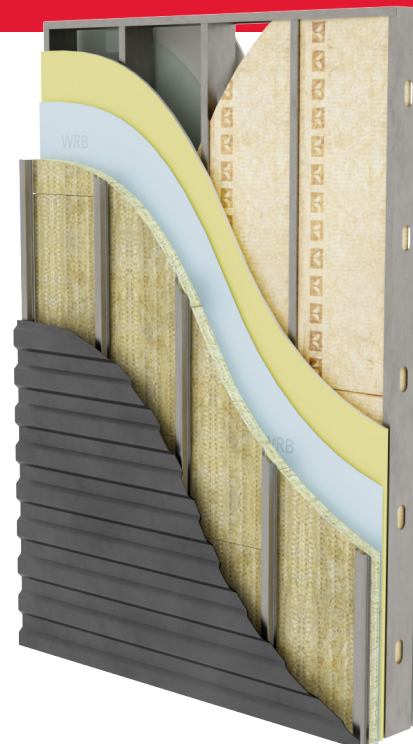
The vapor permeance of ROCKWOOL insulation allows for increased drying potential without trapping transient moisture in the assembly, reducing the risk of mold or corrosion of building components.

Comfortboard® 110 provides the rigidity and durability needed for many heavy weight cladding assemblies.

Learn more at rockwool.com/comfortboard-110

Thermal Performance

Compatible with screw through supported cladding systems, Comfortboard® 110 reduces thermal bridging.



Comfortboard® 110

Exterior Continuous Insulation

Technical Data Sheet
 Board Insulation 05080*
 Board Insulation 07 21 13**

ROCKWOOL Comfortboard® 110 is a rigid stone wool, non-structural insulated sheathing board used as continuous insulation in high-performance wall systems.

	Performance	Test Standard
Compliance	Mineral Fiber Block and Board Thermal Insulation - Type IVA Compliant Mineral Fibre Thermal Insulation for Buildings - Type 1 Compliant	ASTM C612 CAN/ULC S702
Reaction to Fire	Flame Spread Index = 0; Smoke Developed Index = 0 Flame Spread Rating = 0; Smoke Developed Classification = 0 Combustibility of Materials at 750 °C - Noncombustible	ASTM E84 (UL 723) ¹ CAN/ULC S102 ASTM E136
Density	Actual Density - 11 lbs/ft ³ (176 kg/m ³)	ASTM C303
Corrosion Resistance	Stress Corrosion Cracking Tendency of Austenitic Stainless Steel - Passed Corrosiveness to Steel - Passed Corrosiveness to Aluminum - Passed	ASTM C795 ASTM C665 ASTM C665
Thermal Resistance	R-Value / inch @ 75 °F 4 hr.ft ² .F/Btu RSI value / 25.4 mm @ 24 °C 0.70 m ² K/W	ASTM C518 (C177)
Reaction to Moisture	Water Vapor Sorption - 0.28 vol% Water Vapor Transmission, Desiccant Method - 35 perm (2163 ng/Pa-s-m ²) Determination of Fungi Resistance - Passed	ASTM C1104 ASTM E96 ASTM C1338
Compressive Resistance	584 psf (28 kPa) @ 10 % compression	ASTM C165
Thickness Dimensions	1" (25.4 mm), 1.25" (32 mm), 1.5" (38.1 mm), 2" (50.8 mm), 2.5" (63.5 mm), 3" (76.2 mm), 4" (101.6 mm), 5" (127 mm) 24" x 48" (610 mm x 1219 mm), 48" x 72" (1219 mm x 1829 mm)	



For more information regarding the certifications and listings of our stone wool insulation products, please visit:

rockwool.com/certifications-and-listings

Issued 01-2025
 Supersedes 03-2021

NOTE: *Master Format 1995 Edition **Master Format 2004 Edition. As ROCKWOOL has no control over installation design and workmanship, accessory materials or application conditions, ROCKWOOL does not warranty the performance or results of any installation containing ROCKWOOL's products. ROCKWOOL's overall liability and the remedies available are limited by the general terms and conditions of sale. This warranty is in lieu of all other warranties and conditions expressed or implied, including the warranties of merchantability and fitness for a particular purpose. Note 1: Meets Class A requirements for flame spread and smoke-developed indices as per IBC.



8024 Esquesing Line, Milton, ON L9T 6W3
 Tel: 800-265-6878 • Fax: 800-991-0110
rockwool.com