

Additional Information About ROCKWOOL Cavityrock® Black

ROCKWOOL Cavityrock® Black is designed, tested, and approved for use in cavity wall and rainscreen systems that require a black finish due to the material being visible behind the cladding. This black finish is for aesthetic appeal where any visible insulation between the cladding joints will appear black rather than the natural insulation colour.

The black facer is a glass fiber tissue with a black organic mineral coating, providing long-term UV stability. The fleece on Cavityrock® Black is chemically bonded to the insulation during the manufacturing process, offering better mechanical properties and superior long-term performance.

Reaction to Fire and Non-Combustibility

The base insulation product of Cavityrock® Black retains the same technical properties as unfaced ROCKWOOL Cavityrock®. Furthermore, the mineral-coated portion of the black facer from Cavityrock® Black qualifies as a composite material based on its thickness, and the flame spread / smoke developed indexes have been tested in accordance with ASTM E84, "*Standard Test Method for Surface Burning Characteristics of Building Materials*" and CAN/ULC S102, "*Standard Method of Test for Surface Burning Characteristics of Building Materials and Assemblies*".

This is why, as a composite material, the non-combustibility ratings of the base substrate Cavityrock® are maintained for Cavityrock® Black, as per ASTM E136, "*Standard Test Method for Assessing Combustibility of Materials Using a Vertical Tube Furnace at 750°C*" and CAN/ULC S114, "*Standard Method of Test for Determination of Non-Combustibility in Building Materials*".

Storage, Handling and Weather Exposure

For long term storage, ROCKWOOL strongly recommends that the product be stored indoors, in a dry location with the factory packaging removed. If the product is stored outdoors, the factory packaging should be perforated and the product should be protected by a waterproof membrane such as a tarp, that has been properly secured and allowing for ventilation. Product should not be stored in areas that flood, resulting in product storage in standing polluted water. Product should be a minimum of 102 mm (4 inches) above dry ground and kept on a solid flat surface.

The factory packaging is intended for the protection of Cavityrock® Black during shipment and for short-term jobsite storage. It is not intended for protection against the elements during long-term outdoor storage. When transporting Cavityrock® Black, special care should be taken when handling the product. The edges of Cavityrock® Black are most susceptible to potential damage.

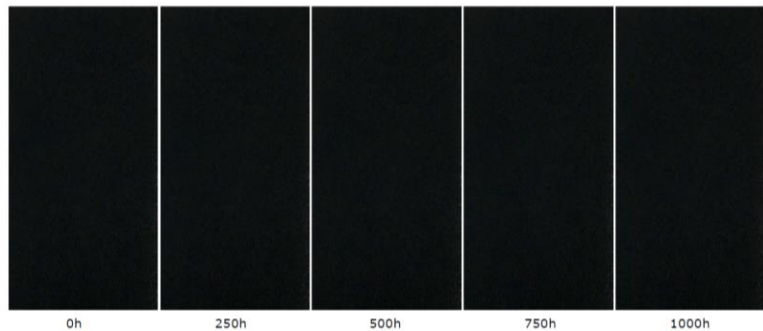
Cavityrock® Black is not subject to degradation from exposure to sunlight. The product is also water repellent and vapor permeable with a water vapor permeability rating of approximately 43 perm. However, insulation that has been exposed to moisture should be allowed to dry out prior to

installation. Once fully dry, it will retain its stated performance provided there is no physical damage or contamination, and that it did not experience freeze and thaw cycles. Such cycles may impact mechanical properties. Long term improper storage and failure to protect product from severe weather can result in physical damage and/or contaminants being driven into the product, in which case the product should be replaced. Furthermore, good construction practice calls for attachment of exterior cladding as soon as possible after the insulation has been installed on the exterior façade.

Ultraviolet (UV) Exposure Testing

The Cavityrock® Black facer has been tested to ISO 105-A02:1993, "Textiles – Tests for colour fastness – Part A02: Grey scale for assessing change in colour". The facer is compared against a grey scale (5 steps) consisting of non-glossy grey colour strips, including four half-steps, for assessing change in colour. The facer achieved a rating of 5/5 at 250 hr and 500 hr exposure, no perceptible change in colour, and a rating of 4/5 at 750 hr and 1000 hr exposure, with no significant loss in depth but a color slightly redder, as shown in the image below.

		Grey Scale
Test		322 Q-5561
Control	250h	5/5
	500h	5/5
	750h	4/5
	1000h	4/5



Cutting Recommendations

When installation requires cutting of Cavityrock® Black, the insulation should be laid down on a rigid surface with the black finish facing up. A minimum ½" distance should be maintained between the hilt of the knife and the facing of the insulation to avoid puncturing the black mat facing.

In order to achieve a sharp and even cut, it is recommended to use a serrated insulation knife. It is advised to use extra care and a slow and steady motion when cutting using a saw-like motion.

To minimize scratching of the black mat facing surface, the product should be kept in its original packaging until installation, at which point the plastic wrap should be removed.

The boards should be carried wool side to face side, and should be stacked facing to facing. Use plastic from the packaging on the facing when carrying up scaffolding to protect the top layer.

Black Accessories for ROCKWOOL Cavityrock® Black

Cavityrock® Black is vapor permable and does not act as an air barrier. ROCKWOOL does not require the use of tape to seal the joints of Cavityrock® Black boards in a rainscreen application. However, if the use of a tape is desired, the three tape options below are examples of products currently available on the market.

- 3M™ Venture Tape™ Woven Patch Tape 442B
- DELTA®-FASSADE TAPE (2.5")
- VaproShield® VaproTape

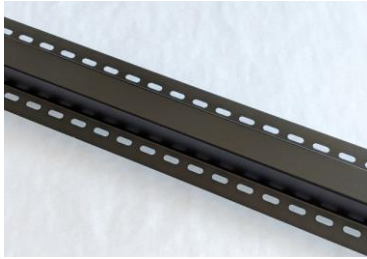


Being aggressive sealing tapes, we do not recommend peeling off the tape once applied. In the event where the tape is required to be removed, special care should be taken to prevent ripping or damaging the Cavityrock® Black facer.

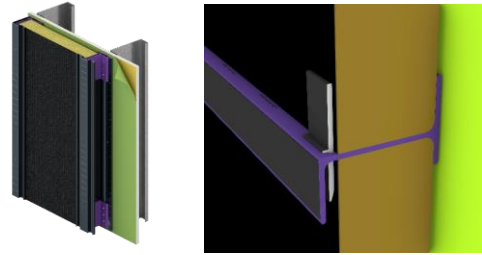
Cavityrock® Black can easily be installed with various cladding attachment systems incorporating clips, girts and/or rails that provide a ventilated cavity behind the cladding. There are several proprietary or generic insulation retention fasteners that can be used. For further guidance on fasteners and/or attachments, please refer to ROCKWOOL's Board Insulation Attachment Guide.

The below manufacturers produce attachment accessories that are available in a black finish to integrate with the aesthetic intention.

- Cascadia
- CLADIATOR®
- ECO CLADDING
- EJOT®
- GEMCO®
- ITW - Ramset®
- Knight Wall Systems
- TRUFAST® WALLS
- SFS NVELOPE
- SMARTci™



Cascadia



CLADIATOR®



EJOT®



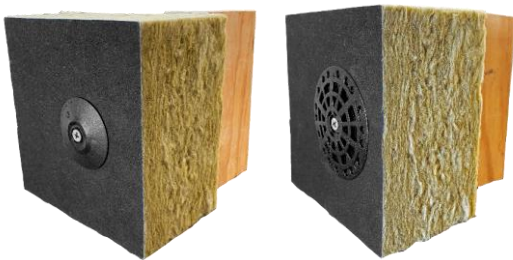
GEMCO®



ITW - Ramset®



Knight Wall Systems



Rodenhouse - Trufast



SMARTci™



As an alternative option to achieve a black finish, HILTI X-IE-G 6 or Ramset InsulFast™ fastener plates/washers, which are only available in white or grey, may be painted using a fast-drying black enamel spray paint.

For more information, please contact ROCKWOOL Technical Services at the phone number or email address below.

ROCKWOOL Technical Services

1-877-823-9790

techservice@rockwool.com