

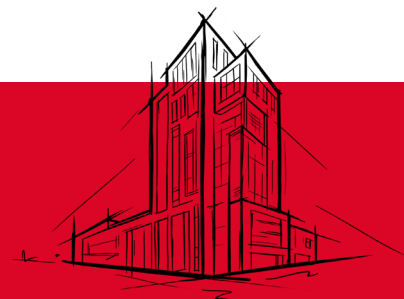
FirePro® Intumescent Pipe Wrap Roll

Fire protection for pipework through fire rated walls and floors

FirePro® Intumescent Pipe Wrap Roll has been replaced by a newer product, FirePro® PWRoll. This datasheet remains available to support existing projects and specifications.

For new specifications, ROCKWOOL highly recommends the use of FirePro PWRoll.

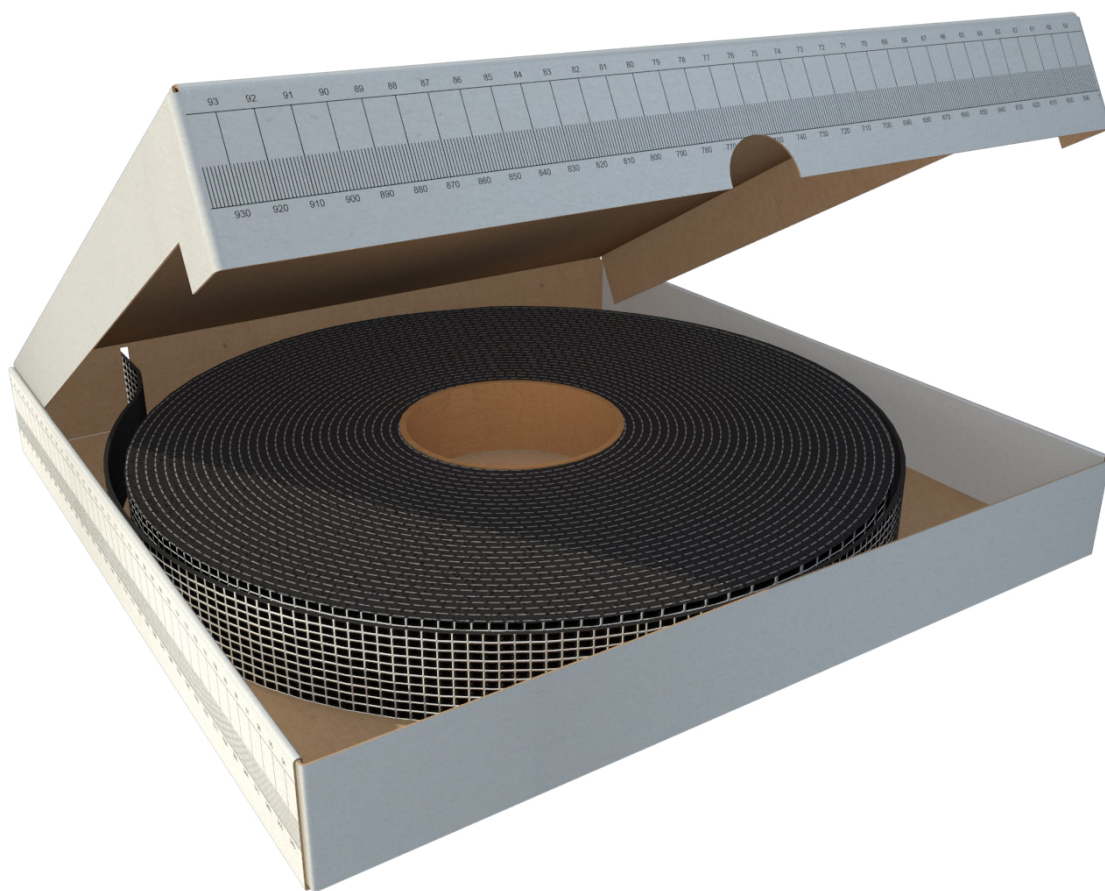
*For product information and guidance, visit:
www.rockwool.com/uk/products/firepro-pwroll/*



Supplied on a 25m roll which eliminates the need to carry a wide range of individually sized fire-stopping product solutions.

FirePro Intumescent Pipe Wrap Roll is suitable for fire-stopping a variety of combustible pipes and metallic pipes insulated with combustible insulation in both walls and floors.

FirePro Intumescent Pipe Wrap Roll



FirePro® Intumescent Pipe Wrap Roll comprises an intumescent material made from elastomeric thermoplastic polymers combined with active components that provide a high volume expansion and pressure seal in the event of a fire.

FirePro Intumescent Pipe Wrap Roll is supplied on 25m roll. The product is 40mm wide and 2mm thick, with integral adhesive tape for securing around the pipe. Depending on the service to be protected and the fire resistance required, multiple layers of wrap may be required, the exact number and positioning of the product is detailed in the performance section of this data sheet.

- Simple to install
- No mechanical fixings required
- Supplied as a 25m long roll in box dispenser
- Available to suit pipes up to 250mm O.D.

APPLICATIONS

Install FirePro Intumescent Pipe Wrap Roll to provide up to 2 hours* fire protection to tested plastic pipework and insulated pipes where they pass through fire rated walls and floors. Installation to be fully in accordance with manufacturer's instructions. **Subject to the application*

Applicable floor constructions to be a minimum 150mm thick, constructed from autoclaved aerated concrete/ concrete/masonry with a minimum density of 650kg/m³.

Applicable wall constructions should be a minimum 100mm thick. Rigid walls to be concrete/masonry blocks a minimum 450kg/m³. Flexible wall constructions should comprise with layers of 12mm gypsum type F plasterboard each side.

Constructions should achieve at least the same fire resistance performance as that required of the penetration seal.

'UL-EU certification and any product label is only applicable to the specific scope and field of application as defined within the current and valid UL-EU certificate number UL-EU-01204-CPR. Any additional details, amendments or additions to the product, or any use outside the scope or field of application, outside of that stated within certificate number UL-EU-01204-CPR has not been reviewed or approved by UL'.

FirePro Intumescent Pipe Wrap Roll

PERFORMANCE

Fire performance

FirePro Intumescent Pipe Wrap Roll has been tested with varying substrates where services penetrate floors and walls. FirePro Intumescent Pipe Wrap Roll can provide fire resistance periods of up to EI 240*. **Subject to the application*

FirePro Intumescent Pipe Wrap Roll has been certified by UL.

Use the links below to access further information on fire performance:

[UL-EU Certificate - UL-EU-01204-CPR >](#)

[Fire-stopping Standard Details Guide >](#)

PRODUCT INFORMATION

Property	Description
Thickness	2mm
Width	40mm
Length	25m
Density	Approximately 1.2 g/cm ³
Volume expansion at 450°C	Approximately 25 times
Shelf life	18 months if stored in a cool, well ventilated area
Expansion pressure (N/mm ²)	Up to max. 1.30

STANDARDS AND APPROVALS

Certificate
Tested to BS EN 1366-4 fire resistance standard for service installations. Penetration seals.
Third party certification through UL, Certificate No. UL-EU-01204-CPR. This certificate is available to download at www.rockwool.com/uk .



FirePro Intumescent Pipe Wrap Roll

INSTALLATION

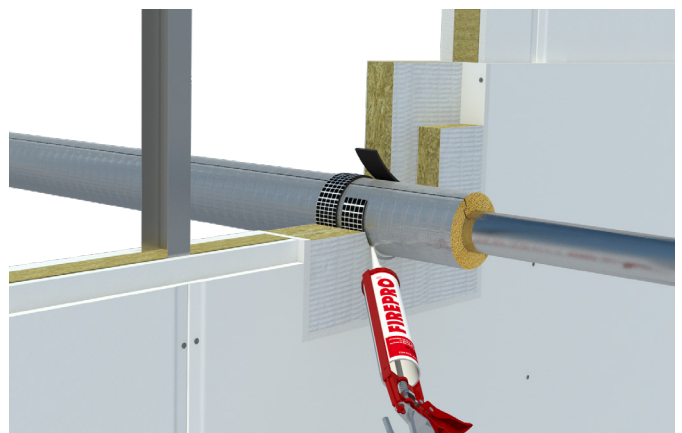
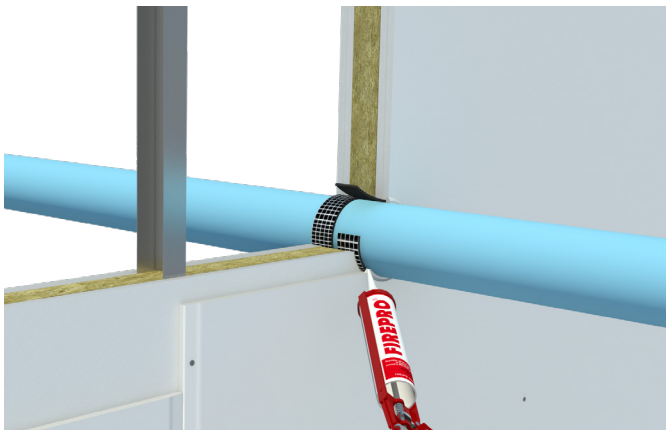
The product is intended to be wrapped around the outside diameter of combustible pipework or the outside diameter of insulation on pipework and is secured by means of the integral self-adhesive strip.

1. Service apertures shall be a minimum 200mm from each other and 200mm from the seal edge.
2. Services should be securely supported no further than 400mm from the upper surface of the seal for floors or each side of the seal for walls.
3. Check that pipe surface and substrate are clean and clear of any debris.
4. Install the correct number of wraps for the service type and ensure the correct number of layers of wrap as detailed in the performance section of this data sheet.
5. Install the wrap into the wall or floor fitted flush to both faces of the wall or floor.
6. Apply a minimum 5mm deep bead of FirePro® FirePro Acoustic Intumescent Sealant over the wrap around the service. Up to a maximum 12mm annulus to be filled with minimum 5mm depth FirePro Acoustic Intumescent Sealant.
7. Maintain a record of the installation.

Under fire conditions, the intumescent material expands against the structure and fills the void left by the burnt out plastic and/or insulation.

Maintenance

During normal use, no maintenance is required.



FirePro Intumescent Pipe Wrap Roll

BUILDING SAFETY AND PRODUCT USE

LEGAL NOTICES

General safety requirements – Building Safety Act 2022

ROCKWOOL Limited is committed to supporting specifiers, resellers and users of ROCKWOOL products for the full life cycle of the product to comply with the obligations and responsibilities set out in the Building Safety Act 2022. With regard to the general safety requirements of the Act, ROCKWOOL Limited cannot control or foresee every situation where its products might be used. We therefore strongly advise that specifiers, resellers and users contact us where use of ROCKWOOL products is contemplated in applications different from those explicitly described in the latest, relevant ROCKWOOL product datasheets; especially in applications that can be reasonably foreseen as critical to safety.

ROCKWOOL Limited reserves the right to amend the specification of its products without notice. Changes to the ROCKWOOL manufacturing process, or to pertinent regulations, may be reflected in changes to tested and certified product performance. Whilst ROCKWOOL Limited endeavours to keep its publications up to date, readers will appreciate that between publications there may be pertinent changes in the law or other developments affecting the accuracy of the information contained in our publications.

ROCKWOOL Limited does not accept responsibility for the consequences of using (including testing or certifying) its products in applications different from those explicitly described in the relevant ROCKWOOL product datasheets. Expert advice should be sought, and ROCKWOOL Limited should be contacted, where such different use is contemplated, or where the extent of any use described by ROCKWOOL Limited is in doubt.

The ROCKWOOL Trademark

ROCKWOOL® - our trademark

The ROCKWOOL trademark was initially registered in Denmark as a logo mark back in 1936. In 1937, it was accompanied with a word mark registration; a registration which is now extended to more than 60 countries around the world.

The ROCKWOOL trademark is one of the most important assets of the ROCKWOOL Group, and is therefore well-protected and defended by ROCKWOOL throughout the world.

If you require permission to use the ROCKWOOL logo for your business, advertising or promotion, you must apply for a Trade Mark Usage Agreement.

To apply, write to:
marketcom@rockwool.com

Trademarks

Registered trademarks of the ROCKWOOL Group include but are not limited to:

ROCKWOOL®, RockClose®, RainScreen Duo Slab®, HardRock®, RockFloor® Flexi®, RockFall®, FirePro®, DuctRock®, BeamClad®, NyRock®

© ROCKWOOL 2025.
All rights reserved.

Photography and illustrations

The product illustrations are the property of ROCKWOOL Limited and have been created for indicative purposes only.

Unless indicated below, the photography and illustrations used in this guide are the property of ROCKWOOL Limited. We reserve all rights to the usage of these images.

If you require permission to use ROCKWOOL images, you must apply for a Usage Agreement.

To apply, write to:
marketcom@rockwool.com

HEALTH & SAFETY

A Material Safety Data Sheet is available and can be downloaded from www.rockwool.com/uk to assist in the preparation of risk assessments, as required by the Control of Substances Hazardous to Health Regulations (COSHH)

FirePro Intumescent Pipe Wrap Roll

ROCKWOOL stone wool - safe to install and live alongside

There are no hazardous classifications associated with stone wool insulation manufactured by ROCKWOOL-UK according to EU REACH and UK REACH regulations on health and the environment.

ROCKWOOL safe use instruction sheets and material safety data sheets (where applicable) can be downloaded [here](#).



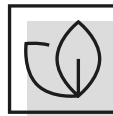
Sustainability

ROCKWOOL products are used to enrich modern living, creating safer, healthier and more climate-resilient communities.

We transform abundant, natural volcanic rock into stone wool insulation products that are used to reduce energy demand, lower fuel bills and help address society's climate change challenges.

ROCKWOOL stone wool insulation is recyclable and can be transformed into new ROCKWOOL products. Please contact us for details of how we can work together to recycle waste ROCKWOOL stone wool material that may be generated during on-site installation.

Our annual sustainability reports, which set out progress against our sustainability goals, and further details of the positive impacts of using our products can be found on our website.



Environment

ROCKWOOL takes a fact-based, auditable approach to documenting our progress in maximising our products' positive impact and minimising the effect our operations have on the environment, backed by third-party references and methodologies. Further details can be found online in our annual sustainability report.

Our high-tech production process uses filters, pre-heaters, after-burners and other cleaning and collection systems that help to reduce the effects of our manufacturing operations on the environment.

ROCKWOOL stone wool insulation does not contain (and has never contained) gases that have ozone depletion potential (ODP) or global warming potential (GWP).

