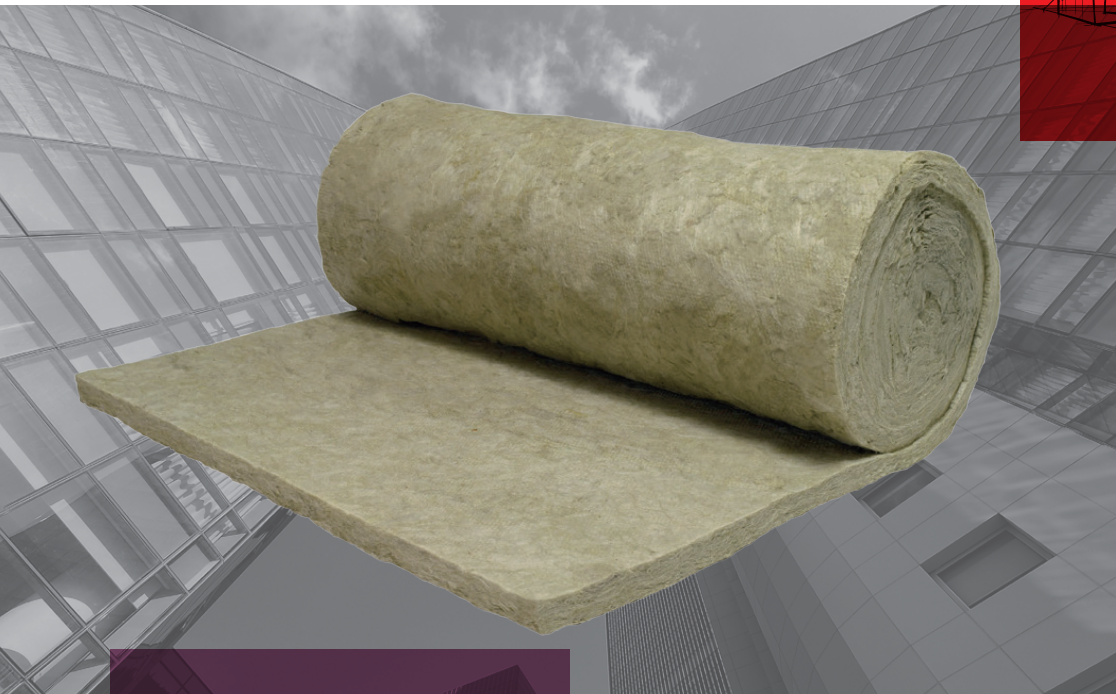




ROCKWOOL Thermalrock B



General Product Information

ROCKWOOL stone wool products are made of basalt, a volcanic stone.

ROCKWOOL stone wool products are non-combustible with a melting point of approximately 1000°C. They are particularly suitable for thermal insulation, fire protection and sound reduction/absorption.

ROCKWOOL stone wool is inorganic and contains no

nutritious substance. Therefore it will not be attacked by microorganisms. Mineral wool will not rot and does not attract vermin.

No CFCs, HFCs, HCFCs, or asbestos are used in the manufacture of ROCKWOOL stone wool products.

ROCKWOOL Thermalrock B

ROCKWOOL stone wool products are mainly made of natural stone.

Common applications

Thermalrock B is manufactured in a wide variety of thicknesses and densities to suit most requirements, suitable for general application in residential, commercial and industrial buildings.

Dimensions

	Thickness(mm)
Thickness(mm)	50-75
Length x Width(mm)	5000 x 600
Nominal densities(kg/m ³)	60-80

Note: Please contact your local representatives for sizes and densities not stated in the datasheet.

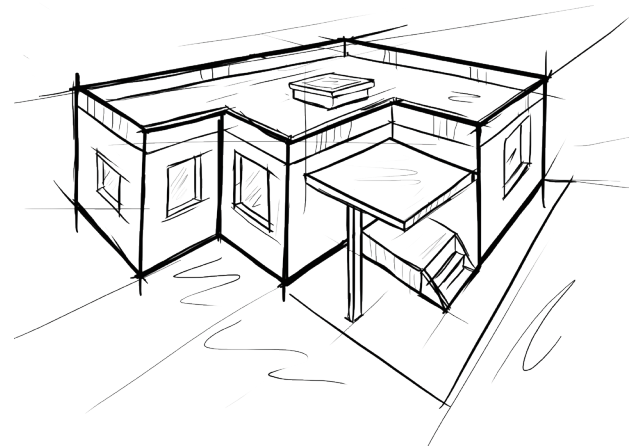
Facings

Thermalrock B products are available in plain, aluminium foil facing and one-sided or two-sided glass tissue facings.

Technical parameters

Product types	TR-B60	TR-B80	Standards
Nominal densities(kg/m ³)	60	80	GB/T 5480
Thermal conductivity 25 °C λ Values (W/mK)	≤0.040		GB/T 10295
Fire Performance	Non-combustible / A1 Fire Classification		GB 8624
Water Repellence	≥99		GB/T10299
Water Absorption	≤0.5		GB/T5480

Note: The information contained in this data sheet is believed to be correct at the date of publication. ROCKWOOL Company does not accept responsibility for the consequences of using TR-B in applications different from those described above.



Packaging and storage

Thermalrock B is shrink-wrapped in polyethylene sheets for ease of handling, transportation, storage and identification. Products should be stored indoors or under a waterproof covering.

ROCKWOOL

Factory:

3 Taihua St, Yonghe Dist of Guangzhou Econ & Tech Development Dist, Guangzhou, Guangdong Province, P.R.C.

Tel: (+86)20 8298 6668

Beijing: (+86)10 6590 6077

Guangzhou: (+86)20 3839 3636

Taiwan: (+886)4 2253 6866

Shanghai: (+86)21 6211 6725

Hong Kong: (+852)2754 0877

Philippines: (+63) 2 7710 650

www.rockwool.com.cn



Official WeChat