

ROCKWOOL

Insulation contribution

– to BREEAM-SE New Construction v. 6.0



How ROCKWOOL stone wool contribute to your certification

The construction materials used in your building can have a large impact on your certification. In order to earn points it is important to choose materials that meet certain criteria within health, safety and the environmental impact throughout their life cycle.

In this document we have highlighted all areas where you are awarded points when using ROCKWOOL solutions. All relevant documentation needed to complete your certification scheme can be found in our documentation assistant: docassist.rockwool.com.

At ROCKWOOL, we transform volcanic rock into stone wool products that address many of society's biggest climate challenges. Our hope is that our solutions can help enrich modern living so that we can build safer, healthier, and more climate resilient communities that can stand the test of time. For more than 80 years we have delivered quality insulation to buildings all around the world and our durability is well documented. Even after more than 65 years, our products perform as well as the day they were installed.

Reference document: BREEAM-SE New Construction v6.0 Version: 6.0.1, published 2023-03-09	March 10, 2023 Approved: CJK Market scope: S Product scope: ROCKWOOL insulation products
--	--

Documentation Assistant

To support your documentation requirements, ROCKWOOL has collected all available sustainability documentation on docassist.rockwool.com for direct download as full packages or a single files.

Documentation for download		BREEAM-SE New Construction 6.0	
Återvinningsprogram – Byggarbetsplats	Recycling: Construction site returns	Wst 01	Construction waste management
Återvinningsprogram – Renovering	Recycling: Demolition and renovation returns	Mat 06	Material efficiency
Instruktion för säker hantering	ROCKWOOL Safe Handling Instructions	Man 03	Responsible construction practices
		Mat 07	Hazardous substances
Miljövarudeklaration (EPD)	Environmental Product Declaration (EPD)	Man 01	Project brief and design
		Mat 01	Environmental impacts from construction products - LCA and GHG calculations
Innehållsdeklaration	Product health – Ingredients	Mat 07	Hazardous substances
Säkerhetsdatablad	Safety Datasheets (ROCKWOOL sealants)	Mat 07	Hazardous substances
Prestandadeklaration (DOP)	Declaration of Performance (DOP)	Man 01	Project brief and design
		Ene 01	Reduction of energy use
		Ene 04	Low carbon design
		Ene 05	Energy efficient cold storage
		Ene 07	Energy efficient laboratory systems
		Mat 05	Designing for durability and climate adaptation
		Pol 05	Reduction of noise pollution (density)
Ansvarig inköpare	Responsible sourcing (listed in current document)	Mat 03	Responsible sourcing of construction products
Återvunnet innehåll	Manuf. Declaration: Recycled content (listed in current document)	Mat 06	Material efficiency and reuse

Support: tools, guides and technical service

ROCKWOOL offers a suite of tools and guides that can support the certification process, eg:

- ➔ Detail drawings (CAD)
- ➔ Installation guides
- ➔ Design guides
- ➔ Energy calculation programs
- ➔ Material calculators for roofs and systems

If you are missing any information, please reach out ROCKWOOL technical service (teksupport@rockwool.com), who will seek to guide you to the required information.



All guides and tools are free and can be downloaded directly via www.rockwool.se

BREEAM SE Categories & Issues where ROCKWOOL stone wool insulation can support achievement of credits		Available Credits
Management		
Man 01	Project brief and design ROCKWOOL stone wool insulation can support a broad range of sustainability objectives, eg: <ul style="list-style-type: none"> • Closed loop recycling, • No addition of flame retardants or biocides • Product specific full life cycle EPDs • ISO 14001 certified production 	4
Man 02	Life cycle cost and service life planning ROCKWOOL stone wool is a durable product, that retain its thermal performance throughout the life span of the building, more than 55 years after installation	4
Man 03	Responsible construction practices The unique circular ROCKWOOL Rockcycle return scheme secures that all surplus insulation material can be returned to the nearest ROCKWOOL facility, where it will be recycled into new insulation material. Safe Handling instructions for ROCKWOOL stone wool are available for download.	6
Health and Wellbeing		
Hea 04	Thermal comfort With a constant lambda year after year ROCKWOOL stone wool insulation contributes to the thermal comfort of any building.	3
Hea 05	Acoustic performance The acoustic properties of ROCKWOOL stone wool insulation absorbs sound, reduces sound transmission through constructions and damps vibration	4

BREEAM SE Categories & Issues where ROCKWOOL stone wool insulation can support achievement of credits		Available Credits
Energy		
Ene 01	Reduction of energy use Durable ROCKWOOL stone wool insulation supports minimal energy consumption in the operational phase. A broad range of free energy optimisation tools are available for download via www.rockwool.se , eg: <ul style="list-style-type: none"> • ROCKWOOL Energiprogram (free energy software) • Design details (Detaljtegninger) • ROCKWOOL designguide "Isolera rätt" 	12
Ene 04	Low carbon design ROCKWOOL stone wool insulation is ideal for passive design buildings.	4
Ene 05	Energy efficient cold storage Magnus: Skrive venligst noget klogt her	3
Ene 07	Energy efficient laboratory systems ROCKWOOL HVAC insulation has a wide array of solutions to support energy efficient HVAC designs in laboratories and other building types.	
Materials		
Mat 01	Environmental impacts from construction products – LCA and greenhouse gas calculations With ROCKWOOLs 3rd party verified EPD generator approved by EPD Norge, ROCKWOOL can deliver product specific EPDs according to EN15804 with an average reduction of greenhouse gasses by 50% throughout the lifecycle of the products. ROCKWOOL recommends the use of product specific data for calculation of LCA and green house gasses.	Depending on building type
Mat 03	Responsible sourcing of construction products ROCKWOOL Nordics four manufacturing facilities are all certified according to ISO 14001. The ROCKWOOL Supplier Code of Conduct (see attachment) is a pre-requisite to be qualified as a supplier to ROCKWOOL. ROCKWOOL expects suppliers to comply with all international, national and local laws and guidelines relating to employment, environmental and manufacturing practices as well as ethics and bribery. ROCKWOOL also expects suppliers to enforce these guidelines towards their suppliers. Exceptions may occur in the case of ad-hoc vendors for indirect materials and services.	4
Mat 05	Designing for durability and resilience ROCKWOOL stone wool is proven to deliver consistent thermal insulation values for more than 55 years. ROCKWOOL stone wool insulation that is considered a water-repellent material that only absorbs water if it is pressed or pressed into the material. The stone wool is also open to diffusion, which means that the moisture is naturally transported out of the material.	1
Mat 06	Material efficiency ROCKWOOL stone wool insulation is designed to fit with common construction designs. Due planning of design and procurement can reduce the volume of waste material. Surplus material can be used in the building or returned to ROCKWOOL for recycling into new insulation material.	1

BREEAM SE Categories & Issues where ROCKWOOL stone wool insulation can support achievement of credits		Available Credits
Materials		
Mat 07	<p>Hazardous substances ROCKWOOL stone wool insulation products fulfil EU regulations for REACH criteria for substances of very high concern (SVHC) and phase-out substances as defined by the Swedish Chemicals Agency (Kemikalieinspektionen, KEMI).</p>	
Waste		
Wst 01	<p>Construction waste management All sorted ROCKWOOL stone wool insulation, can be returned to ROCKWOOL via the Rockcycle recycling scheme, where it will be recycled into new ROCKWOOL stone wool products. All waste handlers are eligible to return ROCKWOOL stone wool waste to a ROCKWOOL Rockcycle partner.</p> <p>Learn more about our Rockcycle offering on www.rockwool.se</p>	3
Wst 05	<p>Adaption to climate change In case of power surges during cold or hot seasons, ROCKWOOL stone wool can support passive strategies for thermal wellbeing and fire safety.</p> <p>ROCKWOOL stone wool insulation is water-repellent and will only absorb water if it is pressed into the material. When fully dried the insulation will retain its original insulation properties.</p> <p>ROCKWOOL stone wool is inherently non-combustible and can resist temperatures above 1,000° C and is a key component in fire-resilient buildings.</p>	1
Wst 06	<p>Functional adaptability ROCKWOOL stone wool insulation built into constructions designed for disassembly, can be returned to ROCKWOOL where it will be recycled into new stone wool products via the Rockcycle circular recycling service.</p>	
Pollution		
Pol 05	<p>Reduction of noise pollution (non-residential only) ROCKWOOL stone wool has an open and porous structure, which allows the stone wool to absorb sound, dampen unwanted noise and is an excellent choice for use in sound insulating constructions.</p>	1

Disclaimer
This document has been compiled for use as supporting documentation for application for a building certification scheme. ROCKWOOL cannot not guarantee that the presented documentation document will be accepted by the certification owner.

Manufactures declaration:

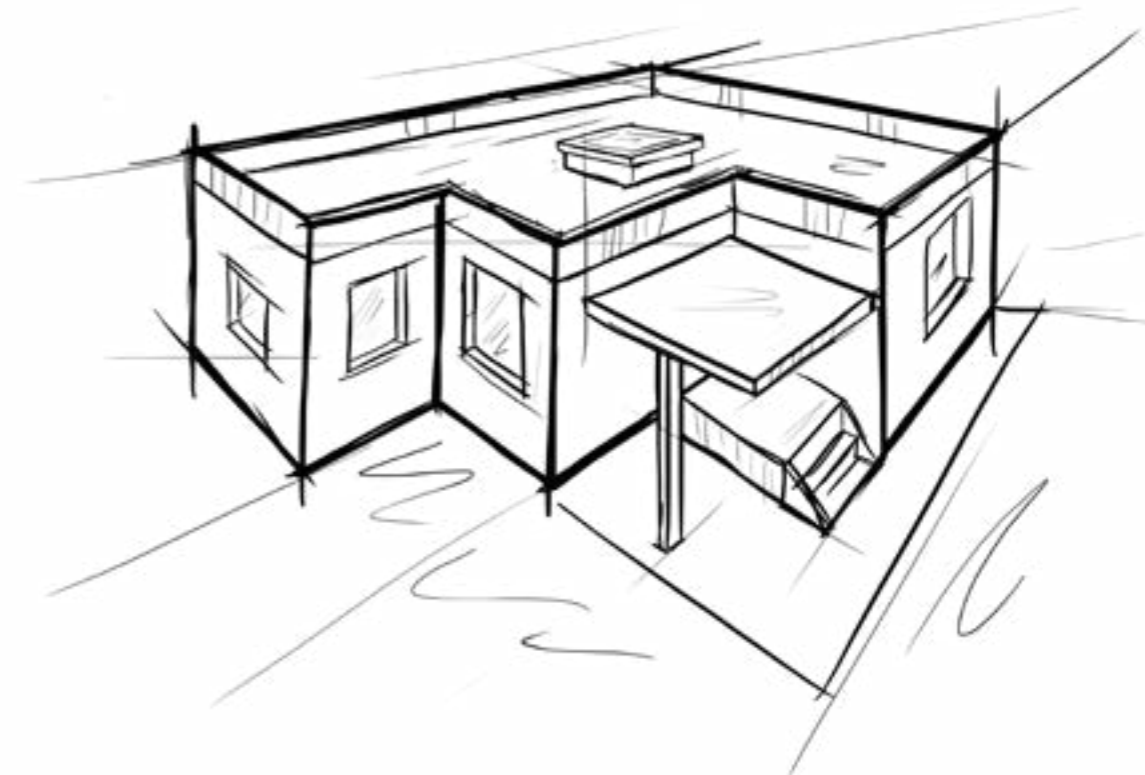
Recycled content of ROCKWOOL stone wool insulation

Average:
22%

Post consumer:
5%

Pre consumer:
17%





3521



DANCERT
TEKNOLOGISK INSTITUT

Dancert A/S
Gregersensvej 1
2630 Taastrup
Tlf. +45 72202160
info@dancert.dk
www.dancert.dk
CVR nr. DK-29512094

Dancert attesterer herved at
Miljøledelsessystemet
hos
ROCKWOOL Danmark A/S
Hovedgaden 501
DK-2640 Hedehusene
på følgende adresse(r)
AS ROCKWOOL, Vaerlegt. 56, Postbox 55, NO-1531 Moss
AS ROCKWOOL, Leangen Alle 1, NO-7044 Trondheim
ROCKWOOL Danmark A/S, Industrivej 9-11, DK-6580 Vamdrup
ROCKWOOL Danmark A/S, Rockwoolvej 2, Øster Doense, DK-9500 Hobro
er i overensstemmelse med kravene i
DS/EN ISO 14001:2015 Miljøledelsessystemer - Krav og vejledning
Gyldighedsområde:
Udvikling, produktion, salg og levering af mineraluld
Certifikatet er gyldigt fra 05-05-2022 til 17-06-2024
Certifikatets gyldighed kan verificeres på www.dancert.dk
Certifikatet blev udstedt første gang 17-11-1997

For Dancert



Jørgen Baadsgaard-Jensen
Adm. direktør



SYSTEM Reg. nr. 6004

Dette PDF-dokument er kun gyldigt, hvis det er digitalt signeret af Dancert A/S

3516



DANCERT
DANISH TECHNOLOGICAL
INSTITUTE

Dancert A/S
Gregersensvej 1
DK-2630 Taastrup
Phone +45 72202160
info@dancert.dk
www.dancert.dk
CVR no. DK-29512094

Dancert certifies that
Thermal insulation products for buildings - Factory made mineral wool products
delivered by
ROCKWOOL Danmark A/S
Hovedgaden 501
DK-2640 Hedehusene
and produced in the manufacturing plant(s)
AS ROCKWOOL, Vaerlegt. 56, Postbox 55, NO-1531 Moss
AS ROCKWOOL, Leangen Alle 1, NO-7044 Trondheim
ROCKWOOL Danmark A/S, Industrivej 9-11, DK-6580 Vamdrup
ROCKWOOL Danmark A/S, Rockwoolvej 2, Øster Doense, DK-9500 Hobro
complies with the requirements of
EN 13162:2012+A1:2015 Thermal insulation products for buildings - Factory made mineral wool (MW) products - Specifications
EN 13172:2012 Thermal insulating products - Evaluation of conformity
Keymark Scheme rules for thermal insulation, version 2.1 Insulation Keymark Scheme for Thermal Insulation Products, Revision 2.1, 23 september 2019
The conformity is assessed on the basis of the assessment activities described by Dancert's supplementary regulations for product certification for the actual product category.
The performance and/or classification of the products is specified at www.dancert.com
The certificate is valid from 05-05-2022 through 14-07-2023
The validity of the certificate can be verified at www.dancert.com
This certificate was first issued on 18-05-2002

For Dancert



Jørgen Baadsgaard-Jensen
CEO



PROD Reg. no. 7001

This PDF document is only valid if digitally signed by Dancert A/S

DECLARATION

Code of Conduct for Suppliers to the ROCKWOOL Group

The ROCKWOOL Group is committed to running its business on ethically and environmentally-sound principles. The ROCKWOOL Group wishes to ensure that we act responsibly in accordance with ethical, legal and international standards of behaviour and we endeavour to continuously improve our social performance.

The ROCKWOOL Group supports the United Nations Universal Declaration of Human Rights and the ten universal principles defined in the UN Global Compact relating to human rights, labour environment and anti-corruption.

The ROCKWOOL Group expects suppliers to uphold similar standards, ideally described in a CSR policy. This Code is designed to explain our expectations to our suppliers in more detail.

Compliance with Applicable Laws and Standards

The ROCKWOOL Group expects suppliers to comply with all international, national and local laws and standards relating to employment, environmental, purchasing and manufacturing practises.

Employment Practices

The ROCKWOOL Group wishes to ensure that the working practices of our suppliers towards their employees regarding such issues as equal opportunities, Trade Union recognition and fair employment terms comply with or exceed national and internationally accepted standards. The ROCKWOOL Group expects all suppliers to strive towards reducing any potential risk to their employees and to provide them with safe and healthy working conditions.

No supplier must, under any circumstances, be involved in the use of child labour.

Environmental Practices

The ROCKWOOL Group expects suppliers to comply with the environmental standards and regulations relevant to their business and to practice sound environmental principles in their operations.

The ROCKWOOL Group has adopted the ICC “Business Charter for Sustainable Development – Principles for Environmental Management”, which identifies responsibilities, requires an Environmental Officer to be appointed, expects companies to have an Environmental Management System with specific 3 year plans and expects all new machinery to be environmentally risk assessed before coming into operation. The ROCKWOOL Group encourages suppliers to follow these principles.

Supply Chain Practices

The ROCKWOOL Group expects suppliers to enforce these guidelines towards their suppliers. ROCKWOOL also reserves the right to audit any sub-supplier.

Purchasing Ethics

Employees of the ROCKWOOL Group, irrespective of their position in the organisation, will not accept any gift from any supplier (either directly or indirectly) that could appear to influence their decisions on sourcing and contracting issues.

The ROCKWOOL Group expects suppliers to ensure that employees, sub-suppliers and sub-contractors are not only aware of these guidelines, but are also committed to uphold the principles set out above.

Bribery

Bribery is defined as occurring when a person offers, gives or promises, directly or indirectly, any financial or other advantage to a private (e.g. business partner) or public industry (e.g. Public Official) in exchange for improperly performing a relevant function or activity. In addition, not only the act of bribing but also the act of being bribed is unacceptable defined as a person requesting, accepting or agreeing to accept a financial or other advantage, in exchange for improperly performing such a function or activity. The ROCKWOOL Group finds bribery unacceptable and expects suppliers to officially and explicitly take a stand against bribery.

Compliance

Compliance with these guidelines is seen as the basis of a good, constructive and professional working relationship between companies. Any deviation from these guidelines could detrimentally affect this relationship and the ROCKWOOL Group reserves the right to cancel the contract in case of any violation of this Code of Conduct.

Acceptance

By ticking off the acceptance box when registering as a supplier to ROCKWOOL Group, you agree to abide by this Code of Conduct. You further accept that the ROCKWOOL Group is entitled to carry out audits with access to relevant information.



ROCKWOOL AB

Box 11505

550 11 Jönköping

info@rockwool.se

www.ROCKWOOL.se

Broschrens begränsningar: Broschren ger en allmän orientering om ROCKWOOL-produkternas användningsområden och lösningarna visar inte alla detaljer som kan behövas vid projekteringsarbete. ROCKWOOL AB kan inte ta ansvaret för det resultat som uppnås vid användande av de olika produkterna då förbrukarnas slutgiltiga användning ligger utanför vår kontroll. ROCKWOOL AB reserverar sig för eventuella tryckfel i broschyren.