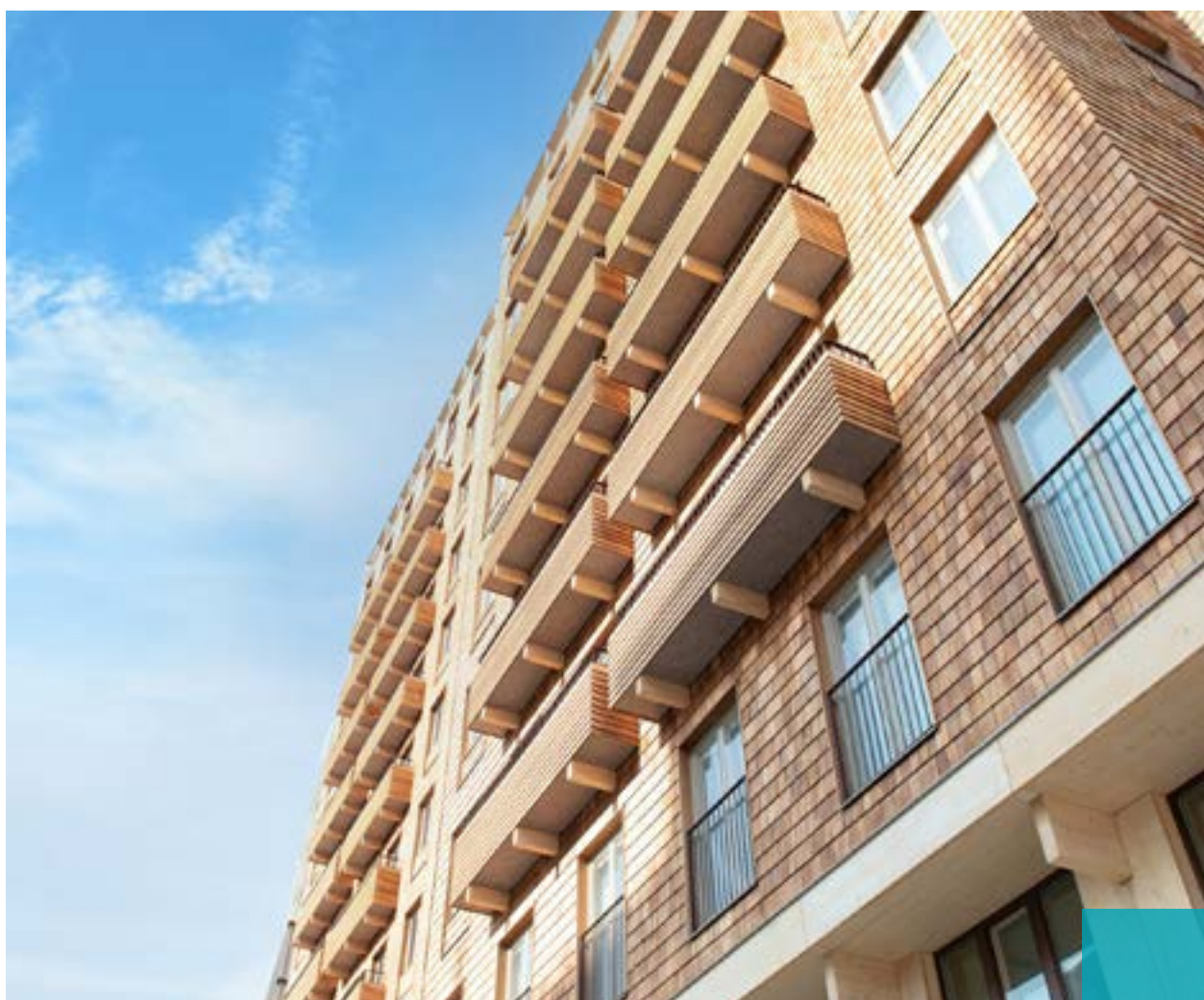




ROCKWOOL Insulation contribution

– to Miljöbyggnad certified buildings



How ROCKWOOL stone wool contribute to your certification

The construction materials used in your building can have a large impact on your certification. In order to earn points it is important to choose materials that meet certain criteria within health, safety and the environmental impact throughout their life cycle.

In this document we have highlighted all areas where you are awarded points when using ROCKWOOL solutions. All relevant documentation needed to complete your certification scheme can be found in our documentation assistant: docassist.rockwool.com.

At ROCKWOOL, we transform volcanic rock into stone wool products that address many of society's biggest climate challenges. Our hope is that our solutions can help enrich modern living so that we can build safer, healthier, and more climate resilient communities that can stand the test of time. For more than 80 years we have delivered quality insulation to buildings all around the world and our durability is well documented. Even after more than 65 years, our products perform as well as the day they were installed.

Reference document: Miljöbyggnad 4.0	Jan 31, 2023 Approved: CJK Market scope: Se Product scope: ROCKWOOL insulation products
---	---

Documentation Assistant

To support your documentation requirements, ROCKWOOL has collected all available sustainability documentation on docassist.rockwool.com for direct download as full packages or a single files.

Documentation for download	Miljöbyggnad sections and issues	
Återvinningsprogram – Byggarbetsplats Recycling – Construction site returns	Indicator 13	Cirkulära materialflöden
Återvinningsprogram – Renovering Recycling – Demolition/renovation returns	Indicator 13	Cirkulära materialflöden
EPD Miljövarudeklaration (Environmental product declaration)	Indicator 4	Klimatpåverkan
Emissionscertifikat Emission classification and Ecolab	Indicator 9	Utfasning av farliga ämnen
DoP Prestandadeklaration Declaration of Performance	Indicator 1	Värmeeffektbehov
	Indicator 3	Energianvändning
	Indicator 6	Ljud
	Indicator 7	Termiskt klimat vinter
	Indicator 8	Termisk klimat sommar
Innehållsdeklaration Supplier declaration: Recycled content (listed in current document)	Indicator 14	Avfallshantering
eBVD (external website)	Indicator 15	Loggbok med byggvaror

Support: tools, guides and technical service

ROCKWOOL offers a suite of tools and guides that can support the certification process, eg:

- ➔ Detail drawings (CAD)
- ➔ Installation guides
- ➔ Design guides
- ➔ Energy calculation programs
- ➔ Material calculators for roofs and systems

If you are missing any information, please reach out ROCKWOOL technical service (teksupport@rockwool.com), who will seek to guide you to the required information.



All guides and tools are free and can be downloaded directly via www.rockwool.se

How ROCKWOOL stone wool insulation can contribute to Miljöbyggnad indicators

Miljöbyggnad indicators where ROCKWOOL stone wool insulation can support achievement of credits	
Indicator number	
1	<p>Värmeeffektbehov (heat effect requirements) With a constant lambda value year after year ROCKWOOL stone wool insulation contributes to the thermal comfort of any building. ROCKWOOLs product range contains insulation materials for large range of applications, with lambda values in the range of 0,032-0,047 (W/m·K).</p>
3	<p>Energianvändning (Energi use) ROCKWOOL stone wool with a constant lambda value, years after years. Rockwool stone wool insulation contributes to maintaining thermal comfort of any building and low operation energy requirements. ROCKWOOL energy calculators fulfil requirements for BBR and are freely available on www.rockwool.se</p>
4	<p>KLIMATPÅVERKAN (Climate impact) ROCKWOOL 3rd party verified product specific EPDs are available via https://www.rockwool.se or at EPD-Norway. ROCKWOOLs EPDs are made according to the updated European standard EN 15804+A2:2019 and cover the full life cycle from cradle to grave. (A1-A5, C1-C4 and D). With our EPD generator we can make product specific EPDs per request. ROCKWOOL product range, on average, perform a 50% reduced greenhouse gas emission, throughout the lifecycle of the product, compared with the standardized database for ecological evaluation of building materials (ökobaudat).</p>
6	<p>LJUD (Noise) ROCKWOOL stone wool has an open and porous structure, which allows the stone wool to absorb sound, dampen unwanted noise and is an excellent choice for use in sound insulation construction. ROCKWOOL Insulation products has a density in the range of: 27-300 kg/m³</p>

Miljöbyggnad indicators where ROCKWOOL stone wool insulation can support achievement of credits	
Indicator number	
7 & 8	<p>TERMISKT KLIMAT vinter & sommar (Thermal climate winter & summer) ROCKWOOL stone wool with a constant lambda value, years after years. Rockwool stone wool insulation contributes to maintaining thermal comfort of any building and low operation energy requirements. ROCKWOOLs product range contains insulation materials for large range of applications, with lambda values in the range of 0,032-0,047 (W/m·K). A broad range of free energy optimisation tools are available for download via https://www.rockwool.com/se/, eg:</p> <ul style="list-style-type: none"> • U-value calculator • Design details (Detaljritningar) • ROCKWOOL guide "Isolera rätt"
9	<p>UTFASNING AV FARLIGA ÄMNEN (Out-phasing hazardous substances) ROCKWOOL stone wool insulation is safe to work and live with and fulfils EU REACH regulation as well as the Swedish PRIO criteria and the ChemSecs SIN list for Hormone disturbing substances</p>
13	<p>CIRKULÄRA MATERIALFLÖDEN (Circular material flows) ROCKWOOL Stone wool insulation contains a minimum of 22% recycled material.</p>
14	<p>AVFALLSHANTERING (Waste handling) The unique ROCKWOOL Rockcycle scheme, ensures ROCKWOOL stone wool insulation is one of the few insulation materials with an existing recycling service that secures that returned ROCKWOOL stone wool is recycled to new stone wool with identical or improved characteristics.</p>
15	<p>LOGGBOK MED BYGGVAROR (Construction materials log book) ROCKWOOL eBVDs are available via www.ebvd.org</p>

Disclaimer

This document has been compiled for use as supporting documentation for application for a building certification scheme. ROCKWOOL cannot not guarantee that the presented documentation document will be accepted by the certification owner.

Manufactures declaration:

Recycled content of
ROCKWOOL stone
wool insulation

Average:

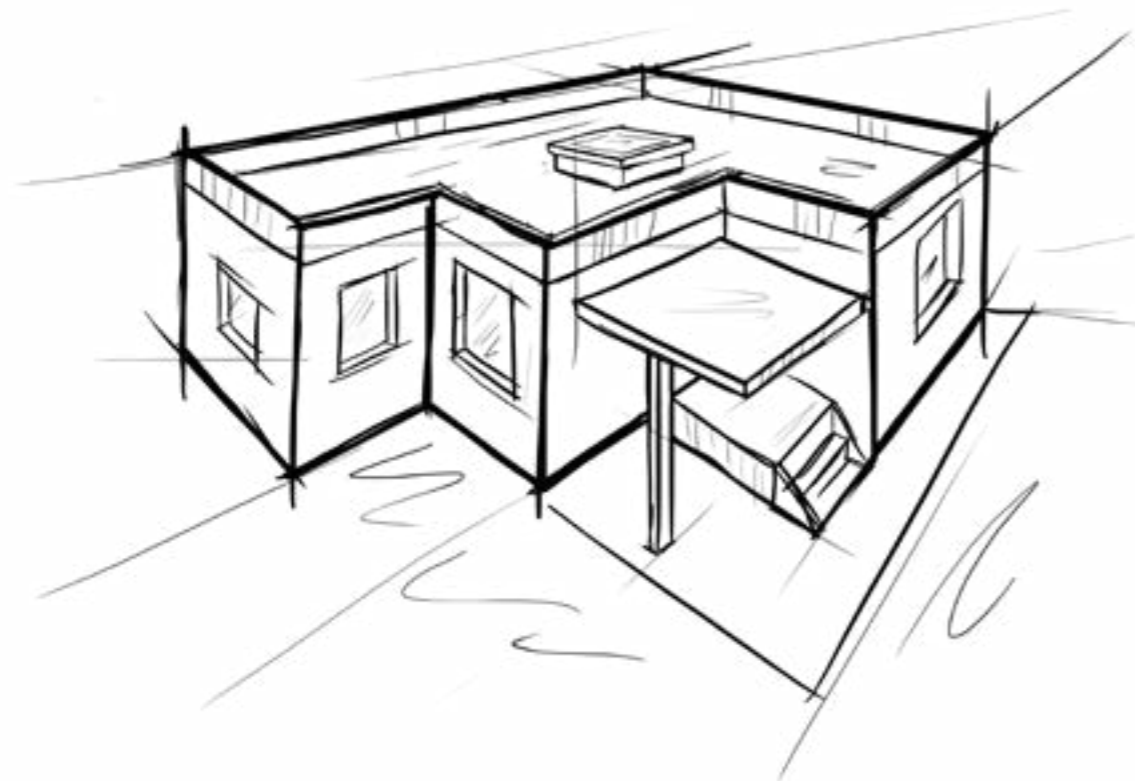
22%

Post consumer:

5%

Pre consumer:

17%



Certificate: Keymark

3516



Dancert A/S
Gregersensvej 1
DK-2630 Taastrup
Phone +45 72202160
info@dancert.dk
www.dancert.dk
CVR no. DK-29512094

Certificate no. 004-SDG-5-137

Dancert certifies that

Thermal insulation products for buildings - Factory made mineral wool products

delivered by

ROCKWOOL Danmark A/S

Hovedgaden 501
DK-2640 Hedehusene

and produced in the manufacturing plant(s)

AS ROCKWOOL, Vaerlegt. 56, Postbox 55, NO-1531 Moss

AS ROCKWOOL, Leangen Alle 1, NO-7044 Trondheim

ROCKWOOL Danmark A/S, Industrivej 9-11, DK-6580 Vamdrup

ROCKWOOL Danmark A/S, Rockwoolvej 2, Øster Doense, DK-9500 Hobro

complies with the requirements of

EN 13162:2012+A1:2015 Thermal insulation products for buildings - Factory made mineral wool (MW) products - Specifications

EN 13172:2012 Thermal insulating products - Evaluation of conformity

Keymark Scheme rules for thermal insulation, version 2.1 Insulation Keymark Scheme for Thermal Insulation Products, Revision 2.1, 23 september 2019

The conformity is assessed on the basis of the assessment activities described by Dancert's supplementary regulations for product certification for the actual product category.

The performance and/or classification of the products is specified at www.dancert.com

The certificate is valid from 05-05-2022 through 14-07-2023

The validity of the certificate can be verified at www.dancert.com

This certificate was first issued on 18-05-2002

For Dancert

Jørgen Baadsgaard-Jensen
CEO



This PDF document is only valid if digitally signed by Dancert A/S

3521



DANCERT
TEKNOLOGISK INSTITUT

Dancert A/S
Gregersensvej 1
2630 Taastrup
Tlf. +45 72202160
info@dancert.dk
www.dancert.dk
CVR nr. DK-29512094

Dancert attesterer herved at
Miljøledelsessystemet
hos
ROCKWOOL Danmark A/S
Hovedgaden 501
DK-2640 Hedehusene
på følgende adresse(r)
AS ROCKWOOL, Vaerlegt. 56, Postbox 55, NO-1531 Moss
AS ROCKWOOL, Leangen Alle 1, NO-7044 Trondheim
ROCKWOOL Danmark A/S, Industrivej 9-11, DK-6580 Vamdrup
ROCKWOOL Danmark A/S, Rockwoolvej 2, Øster Doense, DK-9500 Hobro
er i overensstemmelse med kravene i
DS/EN ISO 14001:2015 Miljøledelsessystemer - Krav og vejledning
Gyldighedsområde:
Udvikling, produktion, salg og levering af mineraluld
Certifikatet er gyldigt fra 05-05-2022 til 17-06-2024
Certifikatets gyldighed kan verificeres på www.dancert.dk
Certifikatet blev udstedt første gang 17-11-1997

For Dancert



Jørgen Baadsgaard-Jensen
Adm. direktør



Dette PDF-dokument er kun gyldigt, hvis det er digitalt signeret af Dancert A/S

ROCKWOOL INTERNATIONAL A/S
Group Sourcing & Procurement

DECLARATION

Code of Conduct for Suppliers to the ROCKWOOL Group
The ROCKWOOL Group is committed to running its business on ethically and environmentally-sound principles. The ROCKWOOL Group wishes to ensure that we act responsibly in accordance with ethical, legal and international standards of behaviour and we endeavour to continuously improve our social performance.

The ROCKWOOL Group supports the United Nations Universal Declaration of Human Rights and the ten universal principles defined in the UN Global Compact relating to human rights, labour environment and anti-corruption.

The ROCKWOOL Group expects suppliers to uphold similar standards, ideally described in a CSR policy. This Code is designed to explain our expectations to our suppliers in more detail.

Compliance with Applicable Laws and Standards
The ROCKWOOL Group expects suppliers to comply with all international, national and local laws and standards relating to employment, environmental, purchasing and manufacturing practises.

Employment Practices
The ROCKWOOL Group wishes to ensure that the working practices of our suppliers towards their employees regarding such issues as equal opportunities, Trade Union recognition and fair employment terms comply with or exceed national and internationally accepted standards. The ROCKWOOL Group expects all suppliers to strive towards reducing any potential risk to their employees and to provide them with safe and healthy working conditions.

No supplier must, under any circumstances, be involved in the use of child labour.

Environmental Practices
The ROCKWOOL Group expects suppliers to comply with the environmental standards and regulations relevant to their business and to practice sound environmental principles in their operations.

The ROCKWOOL Group has adopted the ICC “Business Charter for Sustainable Development – Principles for Environmental Management”, which identifies responsibilities, requires an Environmental Officer to be appointed, expects companies to have an Environmental Management System with specific 3 year plans and expects all new machinery to be environmentally risk assessed before coming into operation. The ROCKWOOL Group encourages suppliers to follow these principles.

Supply Chain Practices
The ROCKWOOL Group expects suppliers to enforce these guidelines towards their suppliers. ROCKWOOL also reserves the right to audit any sub-supplier.

2017-02-13/GSP

ROCKWOOL Supplier Code of Conduct

ROCKWOOL INTERNATIONAL A/S Group Sourcing & Procurement

Purchasing Ethics

Employees of the ROCKWOOL Group, irrespective of their position in the organisation, will not accept any gift from any supplier (either directly or indirectly) that could appear to influence their decisions on sourcing and contracting issues.

The ROCKWOOL Group expects suppliers to ensure that employees, sub-suppliers and sub-contractors are not only aware of these guidelines, but are also committed to uphold the principles set out above.

Bribery

Bribery is defined as occurring when a person offers, gives or promises, directly or indirectly, any financial or other advantage to a private (e.g. business partner) or public industry (e.g. Public Official) in exchange for improperly performing a relevant function or activity. In addition, not only the act of bribing but also the act of being bribed is unacceptable defined as a person requesting, accepting or agreeing to accept a financial or other advantage, in exchange for improperly performing such a function or activity. The ROCKWOOL Group finds bribery unacceptable and expects suppliers to officially and explicitly take a stand against bribery.

Compliance

Compliance with these guidelines is seen as the basis of a good, constructive and professional working relationship between companies. Any deviation from these guidelines could detrimentally affect this relationship and the ROCKWOOL Group reserves the right to cancel the contract in case of any violation of this Code of Conduct.

Acceptance

By ticking off the acceptance box when registering as a supplier to ROCKWOOL Group, you agree to abide by this Code of Conduct.
You further accept that the ROCKWOOL Group is entitled to carry out audits with access to relevant information.

2017-02-13/GSP



ROCKWOOL AB
Box 11505
550 11 Jönköping
info@rockwool.se
www.ROCKWOOL.se