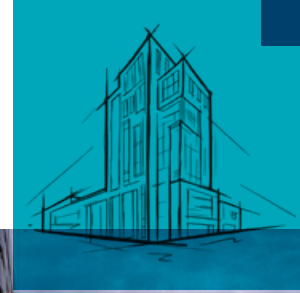


# A Warm Efficient, Sustainable Medical Centre

Case Study



## Project Description

Rush University Medical Center is a 14 story hospital that caters to critical care, surgical, diagnostic and therapeutic services for Chicago and surrounding areas. The architect used input from employees and patients to design this state-of-the-art building that has become one of the nations most advanced hospitals. This center is utilizing the most advanced technology available and has become a design icon for the Chicago area. Another objective of the design is to conserve water, reduce waste and use the most efficient and sustainable building materials. This is why ROCKWOOL products were chosen to be part of the construction.

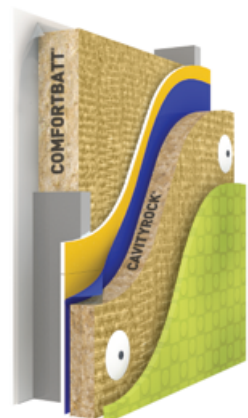
## ROCKWOOL Product Installed

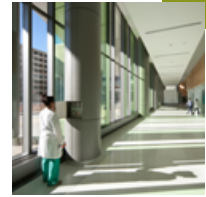
ROCKWOOL CAVITYROCK® was used in the wall system for its stability under wide temperature variations, its fire protection and its green properties. CAVITYROCK®

is fire resistant, water repellent, sound absorbent, sustainable and has a long term stable R-value. It is also 100% recyclable, which compliments the objective of the design to use sustainable building materials.

## Rainscreen Assembly

- Cladding
- Air space
- CAVITYROCK®
- Permeable air barrier
- Exterior gypsum board
- Steel stud
- COMFORTBATT®
- Vapor barrier
- Gypsum board





**Benefits of ROCKWOOL Insulation**

ROCKWOOL stone wool insulation, has a long term stable R-value, is dimensionally stable, fire resistant, water repellent, non-corrosive, sound absorbent, will not promote mold and fungi growth and is environmentally sustainable.

“ROCKWOOL excelled in supplying large quantities of CAVITYROCK® x 3” (24” x 60”) on short notice and the quality of the ROCKWOOL stone wool insulation is exceptional”

- Patrick (PJ) Herald, Vice President  
US Insulation Company/Thermal & Acoustical Contractors

**Architect**

Designed by Ralph Johnson of Chicago Architects Perkins & Will  
330 N Wabash Ave Chicago, IL 60611, United States

**Contractor**

US Insulation Company/Thermal & Acoustical Contractors  
Bloomington, IL 61701  
309-829-6611

**Location:**

Chicago, Illinois

**Project Timeline:**

September 2008-January 2012

**Project Size:**

250,000 sq.ft of CAVITYROCK® 3”



**ROCKWOOL**

8024 Esquesing Line  
Milton, ON L9T 6W3  
Tel: 1 800 265 6878  
rockwool.com

Rush University Medical Centre  
under construction. CAVITYROCK®  
is clearly visible during construction.